

October 2014



# Chai Times

## Temple Beth Emet of Burbank

Mark H. Sobel, Rabbi Ira L. Goldstein, President

600 N. Buena Vista St. Burbank, CA 91505  
(818) 843-4787 Fax (818) 557-7240

"THE TEMPLE WITH A HEART" [www.TempleBethEmet.com](http://www.TempleBethEmet.com) [Office@TempleBethEmet.com](mailto:Office@TempleBethEmet.com)

"In every generation 36 righteous "greet the Shechinah," the Divine Presence [the center of Divine Healing] (Sanhedrin 97b). . .

There is a legend that the world is inhabited by 36 Hidden Tzaddikim (righteous individuals). Their actions, simple and humble are so important that it is said that they protect the entire world. Lastly, they are to remain anonymous as to their identity. I am certain, though, that we all have met one. His name is Jerry Engleberg. Whether or not you have been at a Temple Board Meeting, or read his column or just seen a grey haired man puttering around the Temple, you have been the beneficiary of Jerry's "righteous" caring for our Temple. From appliance repair to toilet paper, Jerry made sure all worked. And alas, it was done in a direct manner that left no doubt as to his passion and commitment to us. A few times he wanted to leave the Temple, usually after someone did not show the level of intensity or caring for the building, the fixtures or the people here. But he always came back to us because he knew how much he was needed. Need was paramount to Jerry. He lived a life of 'Mitzves', doing good deeds. I have been blessed by knowing some of the "secret" ones he did for our congregation, for St. Jude's Church, at a school for handicapped children, and most importantly, for just when people asked for help. Like a foundation of a home, Jerry could in certain places have a gruff exterior, but because the coarseness of the building blocks are there to give stronger natural strength to providing and preserving a home, Jerry's pure love for us all far outweighed any rough edges. In fact, as these rough edges helped hide the heart of a true Tzaddik. May the memory of your actions, Jerry, be a guide for us; preserving and giving life to our world.



Shalom ad bli dai (peace without end), my friend.

Rabbi

### SPECIAL EVENTS



**Yom Kippur Services are on Friday, October 3rd at 8:00 PM and Saturday, October 4th at 10:00 AM at St. Jude's Church, 111 S. 6th Street, Burbank, CA**



**Yizkor Services on October 4th at 3:00 PM.**

**Sisterhood Sponsored Oneg Shabbat in along with Sukkot Celebration, and "Pizza In The Hut" on October 10th beginning at 6:00 PM.**



**MEMORIAL SERVICE FOR JERRY ENGELBERG**  
**Sunday, October 12, 2014 at 2:30 PM**

**Men's Club All Temple Brunch at 9:30 AM and Religious School's Sukkot Breakfast at 11:30 AM on October 12th. (Please see the flier on Page 16.)**



**Simchat Torah Service is on October 17th at 7:30 PM. (See calendar on Page 10.)**



**Now, online, you can visit our website, [templebethemet.com](http://templebethemet.com), or go directly to **YouTube**, to see **Torah for Today**, Rabbi Mark Sobel's weekly drash "podcast."**



### **Religious Leadership**

Rabbi Mark H. Sobel  
Lay Cantor, Kyle Orlemann  
Music and Choir Director,  
Robyn Kreisberg

Rabbi Emeritus William M. Kramer Z"L\*

\*His memory will always be a blessing to us.

### **2013-2014 Officers and Directors**

#### **Officers**

Ira L. Goldstein, *President*  
John Harrel, *Vice President*  
Jeff Fishel, *Treasurer*

#### **Directors**

Shirley Abramson  
Barbara Bolter  
Jack Fishel  
David Goldstein  
Carrie Ross  
Barbara Lux  
Herbert Murez  
Ken Watnick

#### **Past-Presidents**

Steve Abrams  
Richard Emerson  
Norm Goodman

#### **Men's Club President**

Ron Kurtz

#### **Sisterhood President**

Shirley Abramson

### **Morris Gold Religious School Faculty**

Rabbi Mark Sobel, Education Director  
Shirley Kirschenbaum, Grades K-1  
Tanya Termechi & Barbara Lux,  
Grades 2-3  
Tanya Termechi & Barbara Lux,  
Grades 4-5  
Joshua Sobel, Grades 6-7  
Mahnaz Termechi, Bar/Bat Mitzvah  
Preparation  
Martin Greenfield, Confirmation  
(Grades 8-10)  
Robyn Kreisberg, Music  
Rachel Freeman, Teaching Assistant

### **Religious School Parents Organization**

David Goldstein, President

### **Office Staff**

Victoria Gaffney, Sylvia Sutton  
Religious School Office Assistant,  
Edith Dague

### **Committee Chairs**

#### **Calendar and Usage**

Victoria Gaffney

#### **Communications**

Andrea McKinnon

#### **Education**

David Goldstein

#### **Membership**

Barbara Bolter

#### **Ritual**

Ira L. Goldstein

#### **Social Action**

Margaret Goldfarb

#### **Ways and Means**

Linda Harrel

#### **Building and Maintenance**

TBD

### **Coordinators and Volunteers**

#### **Adult Education**

David Goldstein

#### **Chai Times Editor**

Barbara Lux

#### **Children's Hospital LA Toys**

Shirley Abramson

#### **Food Drives**

TBD

#### **Havurahs**

Ruth Glick, (818) 780-9134

#### **Library**

Barbara Lux/Bill Abramson

#### **Marquee**

Craig Weisman/Rabbi Mark Sobel

#### **Mitzvahs**

John Eisenger, 818-842-5439

#### **One Call**

Victoria Gaffney

#### **Reach Out**

Craig Weisman/Rabbi Mark Sobel

#### **Recycling**

Yosi Fisher

#### **Technology**

Alan Barlow

#### **Historian**

TBD/Rabbi Mark Sobel

#### **Youth Group Coordinator** (BBYO: AZA & BBG)

Josh Sobel

#### **Webmaster**

Alan Barlow

***Why not add YOUR talents to those  
who serve our community?***

### **Temple Beth Emet Office Hours**

Monday-Thursday—9:00 AM-noon

Friday & Sunday—9:00 AM-1 PM

Saturday closed

### **The office is closed in observance of the following holidays:**

*New Year's Day, President's Day,  
First day of Pesach, Memorial Day,  
Independence Day, Rosh Hashanah,  
Yom Kippur, Thanksgiving*

Call the Temple office at (818) 843-4787 to  
contact Temple Staff/volunteers. Your message  
will be forwarded to the appropriate person.

## **CHAI TIMES**

**Chai Times** is a free, monthly  
newsletter delivered by email to  
members and available at  
[www.TempleBethEmet.com](http://www.TempleBethEmet.com).  
Mailed hardcopies are available for  
an annual TBE donation payable  
through the Office.

Editable article submissions, photos  
and feedback are encouraged and  
**due by the 15th of the month** and  
may be emailed to:

[chaitimes@TempleBethEmet.com](mailto:chaitimes@TempleBethEmet.com)  
or delivered to the Temple office.  
Submissions will be published based  
on space available, relevant content,  
and at the discretion of Editor  
Barbara Lux, Temple Officers, and  
Directors.

Shop at Ralphs? Register your reward card  
at [ralphs.com](http://ralphs.com) and add TBE as your  
organization! Or register with eScrip.com  
and support TBE when you shop!

### **Follow Temple Beth Emet of Burbank**

View webcasts at

[http://www.ustream.tv/discovery/live/all?  
q=bethemetofburbank](http://www.ustream.tv/discovery/live/all?q=bethemetofburbank)

Join our Facebook group at

<http://www.facebook.com/groups/58688622493/>

If you have any suggestions or ideas on how we can  
better serve our members, please call the office or  
email us at [office@Templebethemet.com](mailto:office@Templebethemet.com)

## **PRESIDENT'S MESSAGE - October 2014**

When Theodore Roosevelt died, his son Archie cabled the news to his siblings: "The old lion is dead." Temple Beth Emet has lost its "old lion." On September 19, Jerry Engelberg died at his home, and our Temple will never be the same.

As I observed in May:



We all know Jerry's reputation. It is a carefully crafted one of a curmudgeon. He has cultivated this reputation over many years of complaining, scolding, and stubbornly doing things the way he wants them done. He is not afraid to speak truth to power. He is not afraid to speak his mind. Many of those who have butted heads with him flee his wrath, only to later sit down with him and talk things out. The man, you see, is a pineapple: Thorny on the outside, sweet on the inside, with a tough core. Jerry has earned his right to be critical by the sweat of his brow. No one person at Temple Beth Emet does so many things for so many people and for the Temple itself.

Jerry adopted our Temple building as his own. If something was broken, he undertook to fix it. If something wasn't right, he didn't hesitate to point it out. He wanted to bring people up to his high standards. He wanted things done right and he wanted people to care. He cared about the details. When he sliced tomatoes for the Men's Club Brunch, he used an electric food slicer so all the slices would be uniform. He wanted people to walk into the sanctuary and see all the prayer books right side up with the front facing out. He took charge of our High Holiday food collection, sorting out donations, and taking anything not kosher to Burbank Temporary Aid and the rest to the Jewish Federation Valley Storefront.

Under his sometimes gruff exterior he was a sensitive, loving person who cared deeply about people and was giving of his time and talent. He took toy donations to Children's Hospital, cans and bottles to the recycling center, cooked breakfast for Family Promise, gave of himself not only to organizations, but to individuals.

He eschewed praise because he said he had a "reputation to keep." He loved humor even though, truth be told, he really couldn't tell a joke that well. He pinned up comic strips in Blum Hall. He loved to laugh and he had this impish, boyish smile that betrayed his sense of fun. He loved this Temple with a passion -- the people, the institution, and the physical campus.

We never wanted to accept that Jerry might one day leave us because we didn't want to believe it. We loved him and depended on him so much. We wondered what would happen to the Temple if something happened to him. Now we must find out.

The way we can fill the void left by Jerry's passing is by finding something Jerry always did and do it ourselves, whether that be fixing something or being caring and giving to others. We need to show that we learned from his example. It will take every one of us, because no one person could possibly replace him.

Our old lion has died. His soul has ascended and, as one Temple member put it, he is rearranging the clouds because their arrangement was not to Jerry's standards. Farewell my friend, I hope you knew how much we all loved you.

-- IRA L. GOLDSTEIN, President



## TO ALL TEMPLE BETH EMET MEMBERS

We are all saddened to learn that Jerry Engelberg has passed on. He was so vital to the functioning of our temple and such a very *colorful* character among us. We will miss him very much. Jerry leaves behind so many responsibilities that he assumed. We will now all have to pitch in together and help each other and our Temple.

Personally, I pray that G-d will restore him, give him peace, happiness, reconciliation, and his heart's desires. I believe he deserves it.

I am running his very last column, as it was. It follows on Page 5. Please read on. . .

Barbara Lux  
Editor



## EDUCATION MATTERS - RSPA PRESIDENT, DAVID GOLDSTEIN

This year's Religious School year has gotten off to a great start. We are glad to welcome several new families who are joining us this year, as well as to welcome back all of our children and parents from last year. The first day of classes on September 7 coincided nicely with a presentation by Rebbetzin Mina Sobel (who was back again by popular demand) entitled, "How To Discover Your Spiritual Soul," which was presented by the Sisterhood for the women of the Temple and Religious School. From what I heard, her presentation was quite informative and well attended. Plans are underway for our school Sukkot celebration, which begins on Friday, October 10th with our "Pizza In The Hut" dinner, followed by Shabbat services. It will be held outdoors under the sukkah and continues with our school's Sukkot breakfast on Sunday, October 12. And, planning is already underway for this year's Hanukkah fundraising performance on December 14th, which promises to be even bigger and better than last year. Finally, this year's Adult Education series "Jerusalem Throughout The Ages," which will be taught by Rabbi Sobel begins on Tuesday November 11 at 7:00 PM and continues monthly through next March, all Temple members and Religious School parents are encouraged to attend this informative series, please contact the Temple office for more information.

David Goldstein, President

## JERRY'S LITTLE CORNER OF THE WORLD



**Happy New Year!** Have you made your New Year's resolutions yet? I hope to attend more Friday Night services AND to help our Temple more is at the top of your list. I have asked for your help for the Temple so many times, I don't know why I ask.

As the Temple is running in the RED each month, I don't want to hire outside contractors to do what we can do ourselves.

If you missed Rosh Hashanah services, you still have time to join us for Yom Kippur on Friday, October 3rd and Saturday, October 4th. When you come for Yom Kippur, as this is a time of fasting, please bring non-perishable food for those less fortunate than ourselves. Toys for Children's Hospital are always a good thing, too. My trailer will be parked outside and, please, let's fill it more than 1/3rd this year.

The Boy Scouts did a fantastic job on our wooden patio cover, but, right after Yom Kippur we need to put up our Sukkah. We need a few good people to help. More on this later. .

With the heat we had in September, I wish all of you good health and happiness. Don't forget to stay well hydrated and as cool as possible. For seniors, the Senior Centers provide fun and games to keep your mind off the heat. For youngsters, try window shopping at a mall. Myra and I just returned from Palm Springs to find out it's hotter here than there!!

As for me, my mind keeps wandering in all directions because of the heat. I'm hurting. If I promised to do something for you personally, please forgive me.

As we had a Children's Service last year. We will have one again this year in St. Jude's Parrish Hall.

**We will see you for Yom Kippur and Sukkot Services.**



***Jerry, we trust our messages to you reaches you wherever you may be. . . We will miss your caring and counsel. We will always remember you. [Ed. Chai Times, October 2014]***

## **JERRY ENGELBERG AND THE SISTERHOOD**

By Ruth Glick, Sisterhood VP

When I joined Temple and Sisterhood about 30 years ago, one of the first people I noticed was Jerry. He was always working. He was in constant motion – fixing things, moving things, cleaning things and helping TBE wherever he could.

With The Sisterhood, he was incredible. The Sisterhood women shopped, set up, served and cleaned up for every Oneg Shabbat. Jerry was there, usually in the kitchen, helping all along the way and often telling us to “go home,” and then he would finish up in the kitchen.

When we had money-raising events, Jerry was there! He moved the furniture around in Blum Hall, helped put up the decorations and helped in the kitchen. When it got late he often said, “Go home, I’ll finish up.”

The past few years Jerry attended our monthly Sunday morning meetings. He had hot or cold beverages ready for us when we arrived and participated in our meetings and activities.

Recently, I asked Jerry why he liked the Sisterhood. His answer was simply, “because you do things and get things done.”

Well, that was Jerry; doing things and getting things done. We will always remember his friendship, loyalty, dependability and helpfulness.

May he rest in peace.



## ***SIMCHAT TORAH!***

*Thursday, October 16, 2014*

Celebrate as we complete the reading of our Torah and begin a new reading cycle.

We'll march around the Temple singing and waiving flags, and unroll the scroll around the whole congregation.



***SPEND THE EVENING AT TEMPLE BETH EMET AS WE  
CONCLUDE THE HIGH HOLIDAY SEASON!***

6:00 PM - Sukkot Yizkor service for those who need to say Kaddish.

6:30 PM - **PIZZA DINNER - \$5 ADULTS, CHILDREN FREE.**

**RESERVATIONS THOUGHT THE OFFICE.**

7:30 PM - Simchat Torah Celebration begins.

Dear Fellow Congregants,

We are planning a Temple Trip to Israel! We now have a working relationship with a travel agent who will gladly give us a special discount on the tickets. If you or any of your family members are interested, please call the Temple office and leave a message for me. The telephone number is (818) 843-4787.

Shalom, Rabbi Mark





### FOLLOW US ON FACEBOOK!

Join the Temple Beth Emet of Burbank Facebook group! Share relevant Jewish issues, timely messages, and pictures with your Temple Family and receive notices and information, as well.



### ***Happy Anniversary***

Harold Flom & Marsha Cohen-Flom

Joel & Sandra Coler

Michael Heiss & Leslie Nathan



## HAPPY BIRTHDAY!!!



Joseph Tanner  
Miranda Goldstein  
Ethan Yarus  
Isabel Frischman  
William Frischman  
Joshua Blank  
Talia Shavit-Weiner  
Samantha Blank  
Max Crosby

October 1, 2014  
October 3, 2014  
October 3, 2014  
October 6, 2014  
October 7, 2014  
October 8, 2014  
October 9, 2014  
October 14, 2014  
October 22, 2014

Quinn Margolin-Moultrie  
Lynda Feldman  
Ben Gordon  
Logan Smith  
Sarrah Lerner  
Nicole Fischer  
Ana Guerro  
Ethan Cohen  
Olivia Goldstein

October 22, 2014  
October 24, 2014  
October 25, 2014  
October 25, 2014  
October 26, 2014  
October 27, 2014  
October 28, 2014  
October 29, 2014  
October 30, 2014

## Havurah (a gathering of friends) Happenings



### **Havurah Shachar (Parents of religious school kids)**

To join or for info contact

Carrie (818) 489-3022

[carriemomoftwo@yahoo.com](mailto:carriemomoftwo@yahoo.com)

### **Havurah Simcha L'Chaim:**

To find out more or form a new one  
call Ruth Glick (818) 780-9134



## Pizza Dinner and Family Shabbat Service

In the Temple sukkah October 10  
Dinner 6PM\* -- Services 7:00PM

\*Adults \$5, children free.

Reservations required by the previous Wednesday. RSVP to Barbara Bolter at (818) 761-3116, or Laura Goldstein at (818) 843-5437

We are continuing with our Second Adult B'nei Mitzvah Class, presented by me, Rabbi Mark Sobel. The classes are on Mondays at 7 PM in the Temple Sanctuary.

The first class begins Monday, October 20th. If you are interested, please contact the Temple Office and give your name and telephone number. The Temple office telephone number is (818) 843-4787.

Shalom,  
Rabbi Mark



## ONEG SHABBAT

Temple Beth Emet is in *dire* need of Member Assistance!

WE NEED: Sponsors, Shoppers, Set-Up and Clean-Up Volunteers

By volunteering for these invaluable tasks, you will be doing a GREAT Mitzvah!

Laura Soroka, TBE's Oneg Coordinator, is more than happy to assist you in planning, answering your questions or helping you with any suggestions you may have.

Please contact her at:

[Laurasoroka52@gmail.com](mailto:Laurasoroka52@gmail.com)

[\(818\) 582-3077](tel:(818)582-3077)



### Friday Fun For All Pizza Night

We will be serving pizza and salad on the **First Friday of every month at 6:00 PM** before service. You won't have to worry about cooking dinner, just grab the kids and join us.

\$5.00 for adults and **kids eat free!**

Please call by Wednesday of that week for reservations:

Barbara Bolter at (818) 761-3116 or  
Laura Goldstein at (818) 843-5437

**Pizza Night Resumes This Month,  
October 10th.  
All are welcome!**



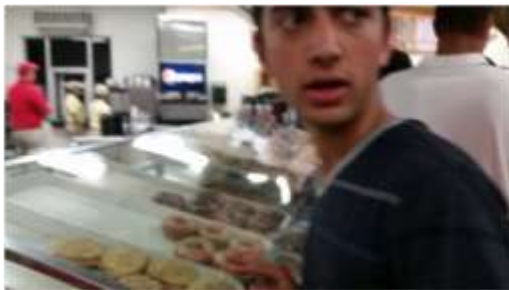
Hello Temple Beth Emet!

We, the members of Knesset, thank you so much for your support. We are part of a Jewish youth organization that allows young Jews all over southern California to meet each other, learn about their culture and heritage, as well as enjoy themselves along the way! Our meetings are on Wednesday nights at the Temple at 7:00 P.M. Our chapter is comprised of males [only] from grades 8-12.



**Knesset and Lilith enjoy a Hawaiian themed night in which we bond as brother and sister chapter. The night included icebreakers, learning about the tightness of the Jewish community, an educational experience, and limbo!**

In the past month alone our chapter has had brotherhood bonding events, a joint meeting with our sister chapter, and our regional Kickoff. We have also been helping a member start his own chapter in Santa Clarita and we are glad to have taught him so much. Some upcoming exciting events will be a Shabbat night with our sister chapter, a hike, mini-golfing, a brotherhood bonding event, an initiation sleepover and much more! If you have any questions, or are interested in joining, please send an email to: [2511knesset@gmail.com](mailto:2511knesset@gmail.com). Thank you and Happy High Holidays!



**One of our members having trouble deciding which doughnut to pick. . .!**



**One of our members ponders a question about what it means to be a Jew in the modern world.**



# Visit the Helen Pappert Gift Shoppe

*The Gift Shop is filled with products for all your Judaic needs. All items are at reasonable prices.*

**Remember the sick and bereaved with cards, calls, and visits.** They help heal and comfort.

We wish them a *Refuah shl'eimah*, whole recovery to good health.

*We mourn the loss of a dear friend and member, Jerry Engelberg. We will miss him and ask G-d's blessing on his memory.*

*We pray for the recovery of Norm Goodman of his recent knee surgery.*

*Our dear congregant member Lois Jones is recovering from eye surgery. We pray for a complete recovery for her.*



**Please call the Temple Office at (818) 843-4787 if a Temple Member is sick or hospitalized.**



## Friday Fun For All Pizza Night

We will be serving pizza and salad on **the First Friday of every month at 6:00 PM** before service. You won't have to worry about cooking dinner, just grab the kids and join us.

**\$5.00 for adults and kids eat free!**

*The schedule has been effected by the High Holiday:*

**Please call by Wednesday of that week for reservations:**

**Barbara Bolter at (818) 761-3116 or Laura Goldstein at (818) 843-5437**

**Pizza Night Resumes This Month, Friday, October 10th at 6:00 PM.**

**All are welcome!**

## SISTERHOOD SIDELINES – OCTOBER 2014

We had a larger than usual turnout for our meeting because many of our members came to hear our Rebbetzin's talk which followed the meeting. More about that later.

We had our opening prayer and collected dues which added up nicely in our treasury. Profit from The Ice Cream Social on August 24<sup>th</sup> added \$327 to our air conditioning fund. Every little bit helps. Our turnout was way down due to the conflict in Temple Activities for that day. Those who did attend had lots of ice cream to eat and games, mainly bingo, to play. A big thank you goes to Marcia Jackman; aka; "Bunny," who did a splendid job of calling the numbers and letters. Everyone went home with prizes and smiling faces.

Please check out our Gift Shoppe! We have beautiful electric Yahrzeit Menorahs. They make lovely gifts and are meaningful additions to our own collections of Judaica. Be sure to shop in our Gift Shoppe first when you set out for holiday shopping.

We are looking into events such as "Dine Out," a Bake Sale or Hanukkah Bazaar to bring in more money. If you have suggestions for us, please attend our next meeting. We would love to hear your ideas. Our goal, as always, is to raise money for our Temple.

At 11am women started filing into Blum Hall and filled almost all the chairs. President Shirley Abramson set out the refreshments and introduced our speaker, Rebbetzin Mina Sobel. She started out with, "What are we here for-----To kill each other?"--- Unfortunately, so much killing is going on in the world and in our own cities and suburbs that we have to wonder. No, we are here to care for each other and our families and our community. After all, we all come from the same Creator! Something to think about!

We are encouraged to elevate ourselves from our problems and give spiritual encouragement to those around us. Rosh Hashanah is a perfect time to improve the quality of our own lives and the lives of others.

She told us about the pomegranate – the fruit with 613 seeds, the same number as there are Commandments and as represented by the Tzitzit with knots. The pomegranate has been called the Jewish fruit.

Rebbetzin Mina talked about and demonstrated, "finding peace within ourselves." She left us feeling proud of our traditions and upbeat! THANK YOU REBBETZIN!

The next meeting is on October 6<sup>th</sup> at 10am. Please join us. Refreshments will be served.

Shalom,

Ruth Glick



SUNDAY	MONDAY	TUESDAY	WEDNESDAY	THURSDAY	FRIDAY	SATURDAY
			<b>1 7:30 PM-8:30 PM BBYO-AZA Meeting</b> 	2	<b>3 8:00 PM Yom Kippur Service</b>  <b>Erev Yom Kippur</b>	<b>4 10:00 AM Yom Kippur Service</b> <b>3:00 PM Yizkor Service</b> 
<b>5 9:00 AM Religious School</b>  <b>10:00 AM Sisterhood Meeting</b>	6	7	<b>8 7:30 PM-8:30 PM BBYO-AZA Meeting</b>  <b>SUKKOT</b> 	9	<b>10 6:00 PM "Pizza In The Hut"</b> <b>7:00 PM SUKKOT SHABBAT SERVICE</b> 	<b>11</b> 
<b>12 9:00 AM Religious School</b> <b>9:30 AM Men's Club All Temple Brunch</b>  <b>11:30 AM Religious School's Sukkot Breakfast</b> 	13	<b>14</b> 	<b>15 7:30 PM-8:30 PM BBYO-AZA Meeting</b> 	16	<b>17 7:30 PM SHABBAT SERVICE</b>  <b>SIMCHAT TORAH</b>	18
<b>19 9:00 AM Religious School</b> 	<b>20 7:00 PM B'Nei Mitzvah Class taught by Rabbi Mark Sobel begins tonight</b>	21	<b>22 7:30 PM-8:30 PM BBYO-AZA Meeting</b> 	23	<b>24 7:30 PM SHABBAT SERVICE</b>	25
<b>26 9:00 AM Religious School</b> 	27	28	<b>29 7:30 PM-8:30 PM BBYO-AZA Meeting</b> 	30	<b>31 7:30 PM SHABBAT SERVICE</b>	

Coming Up in November:

On Monday, November 3rd, from 5-9:00 PM, TBE Sisterhood presents a fund-raiser "A Night Out" dinner at Bob's Big Boy restaurant at 4211 Riverside Drive, Burbank, CA Phone: (818) 843-9334. (See mini-flier on Page 14.)

Beginning Tuesday, November 11 at 7:00 PM "Jerusalem Through The Ages" taught by Rabbi Mark Sobel for the Adult Education Class.





NAME	REMEMBERED BY	DATE	<u>October 24th At Temple, Continued</u>		
<u>October 3rd At Temple</u>			Nosrat Hakhaka	Rebbitzin Mina Sobel	Oct 19
Donald Ham	Kyle Orlemann	Sept 28	William Schneider	Sybil Baitz	Oct 19
Zina Lubow	The Lubow Family	Sept 28	Solomon Freidberg	Stanley Franklin	Oct 19
Joseph Bachelis	Maurice Bachelis	Sept 29	Els Valk Gold	The Gold Family	Oct 19
Jennie Dacher	Ron Dacher	Sept 30	May Lubow	Lester Pink	Oct 20
Nat Goldman	Norman Goodman	Sept 30	Daria Grosberg	Samantha Blank	Oct 21
Mamie Rocklin	Sandra Phillips	Sept 30	Yetta Pink	Lester Pink	Oct 21
Minnie Berger	Stanley Franklin	Sept 30	Thomas Landolfi	Mary Manoccia	Oct 21
Msgr. Martin Keating	The Congregation	Oct 01	Joan Florence Strauss	Howard Strauss	Oct 22
Bernice Dacher	Ron Dacher	Oct 02	Fanny Rosenberg	The Meyerfeld Family	Oct 22
Anne Pollack	Roger Pollack	Oct 03	Mary Reinhart	Dottie Pierce	Oct 22
Harry Ringel	Mark Ringel	Oct 03	Samuel Sopasnik	Judith Antelman	Oct 23
<u>October 10th At Temple</u>			Samuel Sopasnik	Marlene Flowers	Oct 23
Jeanette Kramer	The Kramer Family	Oct 05	Vickie Dolnick Strauss	Howard Strauss	Oct 24
Robert R. Beltzer	Yvonne Beltzer	Oct 05	Larry Weinfeld	Brad Weinfeld	Oct 24
Sarah Solomon	Nissim Ferris	Oct 05	Edythe Breen	Ruthe Granat	Oct 24
Anna Poddig	Monica Pink	Oct 06	Bill Babroff	Leslie Babroff	Oct 24
Vaughn Verdi	Barry Verdi	Oct 06	William Aronoff	Naomi Aronoff	Oct 24
Elizabeth Teller	Mickey Teller	Oct 07	Louise Hammett	Uri Rafaeli	Oct 24
			<u>October 31st at Temple</u>		
Irwin Eugene Siegel	Lisa De Luca	Oct 07	Eva Resnick	Fred Bayer	Oct 26
Dr. Harold Resnick	Sidney Resnick	Oct 07	R. L. Manoccia	Mary Manoccia	Oct 26
Elsie Rattner	Mitzi Rattner	Oct 07	Dora Bigley	Bruce Bigley	Oct 27
Joe Murez	Herb Murez	Oct 09	Dora Bigley	Robert Bogley	Oct 27
Anne Mundon	Cheryl Mundon	Oct 09	Sheldon G. Schorr	Richard Schorr	Oct 28
Nan Gold	The Gold Family	Oct 10	Elmore Leland Rogers	Roxanne Oliver	Oct 28
Joseph Schanzer	Orven Schanzer	Oct 11	Hannah Davis	Marcia Jackman	Oct 29
Irving Jacob	Rina Shavit	Oct 11	Paul Stein	Ron Dacher	Oct 29
Conor Lynch	Vicki & Neil Margolin	Oct 11	Rae Brykman	Harriett Schwab	Oct 29
<u>October 17th at Temple</u>			Henry Shapiro	Meyer Nudell	Oct 29
Irma Karchmer	Syvia Schuster	Oct 12	Eva Pandrowitz	Harriet Feinstein	Oct 30
Rabbi Albert M. Schulman	The Gold Family	Oct 12	Jennie Nudell	Meyer Nudell	Oct 30
Marvin Zweier	Jean Zweier	Oct 12	Frances Rose	Eileen Martin	Oct 30
Stephen Merrill	Andrew Merrill	Oct 13	Roger Wasserman	Julie Wasserman	Oct 31
Dorothy Conner	Harvey Phillips	Oct 13	Bernard Cohen	Robert Cohen	Oct 31
Solomon Sorkin	Sofia Brook	Oct 13	Helen Margolin	Neil Margolin	Nov 01
Zeke Manners	Suzie Manners	Oct 14	William Feinsilber	Joyce Feinsilber	Nov 01
Ida Freemel	Matt Johnson	Oct 15	William Feinsilber	Barry Bucknam	Nov 01
Berthold Kleinberg	Carole Eisenger	Oct 15	Lenora Carpe	Maurine Gold	Nov 02
Abraham Mazor	Howard Strauss	Oct 15	Jewell Bowen	Barbara Klivens	Nov 01
Robert Chorofsky	M/M Don Spielvogel	Oct 15			
Renee Lawrence	Amy Lawrence	Oct 17			
Rev. Harry Cosson	Sybil Bircher	Oct 18			

(Yahzeit Donations may be found on Page 14)

Leslie C. Babroff remembering her mother,  
Janet Beverly Babroff

Leslie C. Babroff remembering her father,  
Albert William Babroff

Margery Brown remembering Susan Bethun Moore

Cathryn Cooper remembering  
Violet Brandon and John Brandon

Cheryl Mundon remembering Lester Klein

Monica Pink remembering her maternal grandmother ,  
Laura D. Sommerfeld

Monica Pink remembering and her paternal  
grandfather, Albert Sommerfeld.

Robert Seeman remembering his father, Max Seeman.

Kaye Stenbeck remembering Rabbi W. Kramer

### **TRIBUTE CERTIFICATE**

Here is an idea you can implement to honor, congratulate, wish a happy birthday, anniversary, a get well wish, Yahrzeit, wedding, birth announcement, graduation, Bar or Bat Mitzvah. Whatever occasion you can think of, this is a delightful option.

Have a Tribute Certificate printed in the Chai Times!

A half-page costs only \$25.00


A full page costs only \$50.00

Extra donations in honor of the occasion are welcome.

Honor that someone special.

While honoring someone special, you will also be supporting Temple Beth Emet.

Tributes need to be requested by the 15th of the month for the next issue.



*For Shirley Abramson and Barbara  
Bolter for their loving help and support  
in making the Alan Glick Memorial  
Oneg so very nice.*

*Thanks and love,  
Ruth Glick*



*TBE Please support our advertisers*

## PLAN AHEAD. IT'S A GIFT OF LOVE.

**Rebecca O'Brien,**  
Advanced Planning Representative  
**800-600-0076 ext 337**

[robrien@mountsinaiparks.org](mailto:robrien@mountsinaiparks.org)

## Memorial Parks and Mortuaries

**Hollywood Hills FD1010**  
5950 Forest Lawn Drive  
Los Angeles

**Simi Valley FD1745**  
6150 Mount Sinai Drive  
Simi Valley

Dedicated to the entire Jewish community  
as a service of Sinai Temple of Los Angeles.

Mon.-Fri.  
9-6



Saturday  
9-5

PHOTO • DIGITAL • VIDEO

**Henry Gross**  
Certified Photographic Consultant

519 N. Glenoaks Blvd.  
Burbank, CA 91502

Phone: (818) 841-5011  
Fax: (818) 845-3331

## Tribute Cards

Tribute cards are always in order for happy or sad occasions. These cards are a wonderful way to remember or honor someone.

Did you know that you can get on an automatic mailing to those in need of well wishes by contacting the office?

A card will automatically be sent from Tribute Chair John Eisenger in your name to those in need of healing and an amount of \$3 will be added to your bill each time a card is sent in your name.

Contact John Eisenger at (818) 842-5439.

When you put **eScrip** on your shopping list you support Temple Beth Emet, and it doesn't cost you anything!



When you shop online at:  
Amazon 2.4%  
Macy's 3%  
Newegg.com 1.2%  
And hundreds of other merchants!

Already supporting your child's school with eScrip?

You can split your contribution among up to 3 organizations.



Temple Beth Emet's Group Number is 500044398

## Super-Transportable **SuperLight** ELECTRIC SCOOTER

- 100 lb Weight
- 24 lb Heaviest Part
- 250 lb Capacity
- 12 Mile Range
- 1 Minute Assembly
- Air Travel Friendly
- Fits in Car Trunk
- Indoor/Outdoor
- Medicare Approved
- No Tools Required



**AA Mobility**

**www.aaamobility.com**

**Toll Free: 1-800-968-7464**



*Fine Estates®*

*Franklyn Burns*

State of California Lic. RE Broker  
Realtor® Consultant  
DRE License #00424940

15300 Ventura Blvd. #101  
Sherman Oaks, CA 91403

Business: 818.986.7300 x101

Cell: 800.897.0006

Fax: 818.986.1066

FRANKBUSINLA@VERIZON.NET  
WWW.FRANKBURNS4RE.COM

## NoHo Mailboxes

5062 Lankershim  
Blvd.  
N. Hollywood, CA  
91601

818-506-7744  
Scott & Ezra Bergstein

20% off FedEx  
Shipping for  
Temple Members

- FedEx, UPS, DHL, USPS & Courier Service
- Private Mailboxes
- Packing, Shipping & Office Supplies
- Prepaid Services, Gift & Phone Cards

## IRA L. GOLDSTEIN Attorney at Law

3500 West Olive Avenue, Suite 300  
Burbank, California 91505

(818) 845-1421

Estate Planning—Probate—Family Law  
Civil and Business Matters

### Chai Times Ad Rates

Ad Size	Monthly	Annually
1/8 page	\$7.50	\$ 70
1/4 page	\$15	\$180
1/2 page	\$25	\$300
3/4 page	\$30	\$360
Full page	\$50	\$600

Please contact the TBE Office to place your ad! You'll be glad you did.

The Chai Times is posted on the Web and reaches hundreds of TBE members in the San Fernando Valley area and surrounding areas (even as far as Alaska!).



Dion Carlo Tretta  
Advertising Manager  
14242 Ventura Blvd #100, Sherman Oaks, CA 91423  
818.453.9103 | dion@treta.aaroe.com  
JOHN AAROE GROUP



**Stefanie Kahn**  
**Realtor®**

**Dion Carlo Tretta**  
**Advertising Manager**  
**14242 Ventura Blvd., Ste. #100**  
**Sherman Oaks, CA 91423**  
**818 453-9103 diontretta@aaroe.com**  
**stefanielovesla@gmail.com**

I'm a proud member of TBE with two children in our Religious school. Refer me to a buyer or seller and upon the successful close of escrow I will donate \$500 to our Temple! Call or send an email to me for references.

## Our Sisterhood Gift Shop

**BROWSE**

**OUR**

**TEMPLE BETH EMET  
GIFT SHOP**



**TOP QUALITY TALLITS  
FOR MEN, WOMEN,  
BAR & BAT MITZVAH**

- . All with matching bag and kippot.
- . All at reasonable prices

### CLASSIFIED AD

If you have a guest house or room with a bath and kitchen privileges available, and can offer it to a Temple Member, please let Rabbi Mark know. It is needed asap. Willing to pay a nominal rent, plus chores (laundry, [good] cooking, ironing, pet and children sitting on occasion).

Please join Temple Beth Emet's Sisterhood on **Monday, November 3, 2014** for a dine-out experience. Bring your family and friends, have a nice meal and share the fun with other Temple members. This is a fund-raising event and the Temple will benefit from your participation. The hours for this event are 5:00 PM to 9:00 PM. Their address is: 4211 Riverside Drive in Burbank. Their phone number is (818) 843-9334. **C'mon!!** The kids (and adults, too!) will enjoy the food and the atmosphere. Get out of the heat and doldrums (if you have any) and spend a little time at Bob's Big Boy Restaurant and also help our Sisterhood contribute to our Temple! We hope to see you there!!



### Temple Member Willing to House-Sit

Worried about leaving your house or pets alone while you travel for business or pleasure? We have a Temple member who can look after your home and keep it the way you do!

Trustworthy, kind and loving to animals (your pets), and available for an extended time, if needs be. Also, willing to provide some administrative service to host, while you are away.

If you, or someone you know and trust has any such accommodations, please call the Temple Office at (818) 843-4787. Leave a message with either Victoria or Edith and they will convey it to Rabbi Mark.

THE TEMPLE BETH EMET MEN'S CLUB PRESENTS  
**RETURN OF THE BRUNCH!**

*FOR THE ENTIRE TEMPLE FAMILY*



**Sunday, October 12, 2014  
Beginning at 9:30AM  
In Blum Hall**

Celebrate Sukkot with us!  
The Religious School will join  
us at 11:30AM as our guests.

**JOIN US FOR A DELECTABLE FEAST  
OF BAGELS, LOX SPREAD, EGGS,  
SWEETS AND MORE!**

BRUNCH IS ONLY \$5! RSVPs ARE REQUIRED  
AND MAY BE MADE BY EMAILING THE TEMPLE  
AT [OFFICE@TEMPLEBETHEMET.COM](mailto:OFFICE@TEMPLEBETHEMET.COM)  
(KINDLY USE "BRUNCH" AS YOUR SUBJECT  
LINE) OR CALL THE OFFICE AT (818) 843-4787.

THE MEN'S CLUB WANTS  
YOU!



To Have Brunch.



*"The Temple With a Heart"*

*Temple Beth Emet of Burbank*

600 N. Buena Vista Street, Burbank, California  
(818) 843-4787 - [www.templebethemet.com](http://www.templebethemet.com)