

October 2015



# Chai Times

## Temple Beth Emet of Burbank

*"The Temple With A Heart"*

### When you do it positively, it will be done ! (Numbers 15:14)

This year is 5776. Known by its Hebrew letters T (tav), S (sin), A (ayin), V (vav) which numerically add up to 776. A second teaching about the mystical understanding of the Hebrew language is that the letters can be re-arranged to give us meaning and direction. So T, S, A, V, may be read as T, A, S, V which means 'You (all) will do!'



What are we all being directed to do? We are being directed to finish creating our Pre-School. We are in the situation only a few weeks from expanding our community. As in all important Temple happenings, especially one which will help the temple grow and has already changed the face of our place in Burbank, it didn't happen overnight, and it wasn't just one person's efforts which brought us to here. Also, great 'buildings' don't get constructed without discussion, disagreement and, thank G-d, compromise and agreement, especially not Jewish edifices. At this time, I personally, on behalf of the entire congregation wish to thank John and Linda Harrel, David Goldstein, Temple President Ira Goldstein, Temple Vice President Jack Fishel, and the entire Temple Board of Directors for the past two years for their service in helping bring this project to where it is today. I would also like to apologize for any disagreements I have had with those people where I have hurt their feelings. Let our rubric still be, fellow leaders of the congregation, "To agree to disagree." And let us still work together for the common goal.

Now, what is the common way to perform YOU WILL DO? How do WE, our entire congregation, accomplish creation of the new TBE "child?" With G-d as our guide and the creation of this world as our road map, may we ALL do Imitatio Dei:

Day 1-LET THERE BE LIGHT- ENLIGHTEN BURBANK, GLENDALE, NORTH HOLLYWOOD, ETC. THAT WE HAVE A NEW PRE-SCHOOL.



**Happy Simchat Torah!!**

Pizza Night resumes on **Friday, Oct. 2nd at 6:00 PM**. It will be followed by the Family Shabbat Service at 7:00 PM. **See Page 13 for flier "Pizza In The Hut" for Sukkot.**



**Monday, Oct. 5**  
Sukkot/Yizkor Service - 6:45PM  
Simchat Torah - 7:00 PM  
See Page 7 for details.

Our Men's Club is resuming **the Men's Club Bagel Brunch & Meeting** on every third Sunday of each month at 9:30 AM in Blum Hall. See Page 6 for details.



Rabbi Mark is a regular contributor to the **In Theory** column, which appears online at <http://www.burbankleader.com/opinion/religion/>

(Continued from Page 1)

**Day 2** AS G-D SOUGHT TO PROTECT HER/HIS CREATIONS, LET US PROVIDE A SAFE PHYSICAL HAVEN WHERE CHILDREN FEEL SAFE.

**DAY 3** AS G-D CREATED ALL TYPES OF PLANT LIFE TO NUTURE AND BE NUTURED, MAY WE ESTABLISH A SCHOOL FULL OF NURTURING.

**DAY 4** AS G-D CREATED THE STARS, THE SUN AND THE MOON- LET US CREATE A WORLD WHERE ALL CHILDREN ARE STARS AND WHERE THOSE WHO MAY NOT SHINE AS BRIGHTLY AS OTHERS STILL FEEL AS EMPOWERED AS ALL:

(May we always remember the story of the Sun and the Moon.)

**Day 5** AS G-D CREATED THE CREATURES WHO ROAM THE SEAS, WHO LOOK AND MOVE MUCH DIFFERENTLY THAN WE DO, MAY WE CREATE A PLACE WHERE ALL MOVE AT THEIR OWN PACE AND IN THEIR OWN WAY.

**DAY 6** AS G-D CREATED ALL TYPES OF CREATURES FROM THOSE WHO CRAWLED ON THE EARTH TO THOSE WHO FLEW IN THE SKY- LET US WELCOME ALL, AND MAY WE ALWAYS BE THE CONGREGATION WITH THE HEART, OPEN TO ALL WHO SEEK US AND WILLING TO LET ALL GROW IN THEIR OWN UNIQUE WAY.

And when we have done all this,

WE CAN REST FROM ALL WE HAVE DONE AND SAY "IT IS GOOD" - JUST AS G-D DID!

FOR TRULY, THE RICHER THE TEXTURE, THE MORE PRECIOUS THE BEAUTY.

B'ahava and Shana Tova,

Rabbi Mark

Attention: To all those interested in a trip to Israel. . . Our trip has been scheduled for **January 14, 2016 and return January 26, 2016**. We will have a meeting here at Temple to discuss details on Tuesday, October 27th at 7:30 PM. If you are interested in going, please call the Temple Office to make a reservation. We already have a small, confirmed group, but would like to have more.



L'Shana Tovah! I'd like to wish our entire Temple and Religious School community a healthy, happy, and prosperous 5776. Our Religious School year got off to an especially festive start this year, with the first day of classroom instruction on Sunday, September 13th falling on the day before Rosh Hashanah. The children celebrated the beginning of a sweet new year with apples and honey at Religious School and then many of them attended our Children's Services at St. Jude's the following day, as well as on Yom Kippur.

Our popular "Pizza In The Hut" Sukkot Children's Service on Friday, October 2nd, was well attended and the children continued their celebration of the Sukkot holiday on Sunday, October 4, with our annual Religious School Sukkot Breakfast of bagels and cream cheese and fall fruits representing the harvest holiday.

Planning is currently underway for our Hanukkah Fundraising Performance coming up on December 6th, please mark the date on your calendars. This year's celebration promises to be bigger and more fun than ever, the kids will once again be performing an original Hanukkah musical, written by Robyn and the Rabbi and we have had many requests for the return of the Canters food truck, which came last year; if you have any other suggestions for this event feel free to attend our upcoming meetings of the Parents Association which will be taking place on Sunday, October 18th and Sunday, November 8th from 9:00-10:00 AM.

And we are looking forward to this year's Adult Education series "Kabbalah-The Key To Better Living" which begins on Tuesday, November 10th at 7:00 PM; the topic of our first class will be "**Meditation-Lock Out The World When You Need To.**" Everyone is welcome to attend these lively and thought provoking classes, there is a suggested donation on just \$5 per class or \$20 for the entire series of 5 classes. Hope to see you there!"

David Goldstein  
RSPA President







## Religious Leadership

Rabbi Mark H. Sobel  
Lay Cantor, Kyle Orlemann  
Music and Choir Director,  
Robyn Kreisberg

Rabbi Emeritus William M. Kramer Z"l\*  
\*His memory will always be a blessing to us.

## 2015-2016 Officers and Directors

### Officers

Ira L. Goldstein, *President*  
Jack Fishel, *Vice President*  
Jeff Fishel, *Treasurer*  
Laura Soroka, *Secretary*

### Directors

Shirley Abramson  
Barbara Bolter  
David Goldstein  
John Harrel  
Linda Harrel  
Barbara Lux  
Herbert Murez  
Ken Watnick

### Men's Club President

Ron Kurtz

### Sisterhood President

Cathy Zitnick

## Morris Gold Religious School Faculty

Rabbi Mark Sobel, Education Director  
Shirley Kirschenbaum, Grades K-1  
Tanya Termechi & Barbara Lux, Grades 2-3  
Tanya Termechi & Barbara Lux, Grades 4-5  
Staff ~ TBD, Grades 6-7  
Mahnaz Termechi, Bar/Bat Mitzvah Preparation  
Joshua Sobel, Confirmation (Grades 8-10)  
Robyn Kreisberg, Music  
Rachel Freeman, Teaching Assistant

## Religious School Parents Association

David Goldstein, President

## Office Staff

Office Manager/Secretary,  
Victoria Gaffney  
Religious School Office Assistant,  
Edith Dague

## Committee Chairs

### Calendar and Usage

Victoria Gaffney

### Communications

Andrea McKinnon

### Education

David Goldstein

### Membership

Barbara Bolter

### Ritual

Ira L. Goldstein

### Social Action

TBD

### Ways and Means

Linda Harrel

### Building and Maintenance

TBD

## Coordinators and Volunteers

### Adult Education

David Goldstein

### Chai Times Editor

Barbara Lux

### Children's Hospital LA Toys

Shirley Abramson

### Food Drives

TBD

### Havurahs

Ruth Glick, (818) 780-9134

### Library

Barbara Lux/Bill Abramson

### Marquee

Craig Weisman/Rabbi Mark Sobel

### Mitzvot

TBD

### One Call

Victoria Gaffney

### Oneg Coordination

Laura Soroka, (818) 582-3077

### Reach Out

Craig Weisman/Rabbi Mark Sobel

### Technology

Alan Barlow

### Historian

TBD/Rabbi Mark Sobel

### Youth Group Coordinator (BBYO: AZA & BBG)

Josh Sobel

### Webmaster

Alan Barlow

**Why not add YOUR talents to those who serve our community?**

## Temple Beth Emet Office Hours

Monday-Thursday—9:00 AM-noon

Friday & Sunday—9:00 AM-1 PM

Saturday closed

## The office is closed in observance of the following holidays:

*New Year's Day, President's Day,  
First day of Pesach, Memorial Day,  
Independence Day, Rosh Hashanah,  
Yom Kippur, Thanksgiving*

Call the Temple office at (818) 843-4787 to contact Temple Staff/volunteers. Your message will be forwarded to the appropriate person.

## CHAI TIMES

**Chai Times** is the free, monthly newsletter of Temple Beth Emet of Burbank, delivered by email to members and available at [www.TempleBethEmet.com](http://www.TempleBethEmet.com).

Mailed hardcopies are available for an annual TBE donation payable through the Office.

**Editable article submissions, photos and feedback are encouraged and due by the 15th of the month and may be emailed to:**

**[chaitimes@TempleBethEmet.com](mailto:chaitimes@TempleBethEmet.com) or delivered to the Temple office. Submissions will be published based on space available, relevant content, and at the discretion of Editor Barbara Lux, Temple Officers and Directors.**

## Follow Temple Beth Emet of Burbank

View webcasts at

[http://www.ustream.tv/  
discovery/live/all?  
q=bethemetofburbank](http://www.ustream.tv/discovery/live/all?q=bethemetofburbank)

"Like" our Facebook Page at

[https://www.facebook.com/  
TempleBethEmet?fref=ts](https://www.facebook.com/TempleBethEmet?fref=ts)

If you have any suggestions or ideas on how we can better serve our members, please call the office or email us at:

[office@Templebethemet.com](mailto:office@Templebethemet.com)



PRESIDENT'S MESSAGE - October 2015



The recent visit of Pope Francis to the United States appears to have stirred the spiritual consciousness of our country. Catholics and non-Catholics alike have been attracted to his message of humility and humanity. Although as Jews we have profound theological difference with the Catholic Church, and Christianity in general, much of what Pope Francis preached during his visit resonates with core values of Judaism -- the duty to guard and repair the environment, to be humane in our treatment of other creatures, and, as we are advised in Mica, to act with charity and mercy toward our fellow humans and to walk humbly with Adonai.

Some politicians, although professing that religion is part and parcel of the American system of government, have brushed aside Pope Francis as not understanding science and not understanding the Bible! Yet the massive crowds that have met him in Washington D.C., New York, and Philadelphia testify to the resonance of his message and his call on people to become better selves. Even in the area of politics, Francis' visit may well have played a role in the decision of the Speaker of the House to retire from that body and may yet play a role in the decision of the Vice President to either seek or not seek the nomination of his party.

This man, so humble that he asks those he meets to pray for him, seems to have given us permission and encouragement to be more spiritual individually. That may translate into greater participation in religious and charitable institutions.

We Jews have not had a single person to act as a religious leader since Moses. We do, however, have the Torah, our local leaders, and our communities (like Temple Beth Emet). Wouldn't it be wonderful if Francis' call for people to take care of each other and love each other translated to an increase in synagogue participation across the United States, where it has lagged over the years? While his preaching is in the language of the Catholic Church, as Jews we pride ourselves on having given the world the concept of one God and our universal obligation to do His work on Earth. Do we not believe that there are many paths up the mountain? Our Temple family has always understood that we can respect religious pluralism yet remain true to the precepts of Judaism.

Whether Pope Francis' visit to the United States will have a lasting positive impact on our country is something that only time will tell, but his message should resonate with us as Jews, and we can and should turn that resonance into a stronger commitment to our Jewish values and greater involvement in our Jewish community.

-- IRA L. GOLDSTEIN, President



## ONEG SHABBAT

### HELP IS NEEDED!

TEMPLE BETH EMET IS SEEKING  
SHOPPERS AND SPONSORS  
TO ASSIST IN MAKING FRIDAY NIGHT  
ONEG SHABBATS POSSIBLE.

SPONSORS SUPPLY THE DELICIOUS SNACKS  
THAT CONGREGANTS  
AND GUEST ENJOY WHILE SOCIALIZING  
AFTER SERVICES.  
SHOPPERS PURCHASE THE TASTY SNACKS  
WITH A SET BUDGET  
WHEN THE TEMPLE IS THE HOST.

We have a *serious* shortage of shopping, setup  
and cleanup volunteers. Can you  
find it in your heart to contribute your time and/  
or sponsor an Oneg Shabbat?

FOR FURTHER DETAILS PLEASE CONTACT:  
Laura Soroka, TBE Oneg Shabbat Coordinator  
(818) 582-3077 or  
[Laurasoroka52@gmail.com](mailto:Laurasoroka52@gmail.com)



THE  
MEN'S  
CLUB  
WANTS  
YOU...

### TO JOIN US FOR BRUNCH!

The monthly Men's Club brunch  
is back and is open to everyone  
in the Temple community. Join  
us for coffee, camaraderie and  
consumables.

**SUNDAY, OCTOBER  
18 at 9:30AM**

Brunch is only \$5, but when  
you join the Men's Club,  
we'll take that \$5 off your  
club dues!



**THE FRIDAY FUN FOR ALL  
PIZZA NIGHT IS ON OCTOBER  
2ND, "PIZZA IN THE HUT!"  
COME AND HAVE A GREAT  
PIZZA DINNER AT 6:00 PM AND  
THEN SUKKOT SERVICE AT 7:00 PM,  
IMMEDIATELY AFTER DINNER.**



**COME JOIN US.**

## ***SIMCHAT TORAH!***

*Monday, October 5, 2015*

Celebrate as we complete the reading of our Torah and begin a new reading cycle. We'll march around the Temple singing and waving flags, and unroll the scroll around the whole congregation.



## **NOTE THE NEW, EARLIER TIME!**

SPEND THE EVENING AT TEMPLE BETH EMET AS WE  
CONCLUDE THE HIGH HOLIDAY SEASON!

6:45 PM - Sukkot Yizkor service for those who need to say Kaddish.

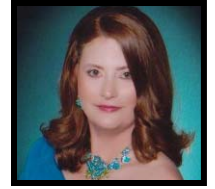
7:00 PM - Simchat Torah Celebration begins.

## *A Message From Cathy Zitnick, Sisterhood President*

### **SISTERHOOD MESSAGE FOR OCTOBER 2015**

Dear Members:

I am looking forward to the first meeting of the Sisterhood in the New Year. At the Open House, as well as at Rosh Hashanah Services, I was able to get a couple ladies from each event to say that they would like to join Sisterhood.



The fundraiser of the Honey Gift Boxes went well. Every year, the Sisterhood makes Honey Gift Boxes so that members of the Temple can purchase them and give them or send them to family members with wishes of a sweet New Year. Barbara Bolter, Shirley Abramson, and I put together fifty boxes to sell this holiday season, and almost all of them sold. Shirley also made some sales from the Temple Gift Shop, so we had very decent September sales.

Rosh Hashanah and Yom Kippur services were attended by many, and I was so happy to see so many congregants there. Still being fairly new to the Temple, there were so many people I still do not know. However, I know that with time, I will get a chance to be introduced to everyone. I understand that there were not many who attended the Mens' Club Bagel Breakfast (soon to be Mens' Club Brunch, but Ron Kurtz told me that he got two new members; and they were young men whom he hopes will stay with the Mens' Club for many years to come. He seemed thrilled with having got new members, and I could relate because there is strength in numbers. I, myself, was not able to attend the Men's Club Brunch; which fell between Rosh Hashanah and Yom Kippur. My mother and I have created a family tradition. Every year on the Sunday between the holidays, our local mortuaries sponsor a Kever Avot service to remember the dead, which is a wonderful concept. This gives my mother and I, as well as hundreds of others in the Southland, the opportunity to visit the graves of our loved ones on this day after the Service. The mortuary has not only helped my mother and I create another "Mother-Daughter Day," but it has reinforced our responsibility to tend to the graves of our dearly departed.

Our next meeting will be the morning of October 4<sup>th</sup> at 10:00 AM in Blum Hall. I would like all you ladies to attend. I am sure that there are many of you out there that I have yet to meet. I will look forward to making your acquaintance.

In conclusion, Ira Goldstein let the congregation know, at Yom Kippur Services, that Family Promise will resume and that Temple Beth Emet has elected to be one of its contributors. For those who have not been acquainted with Family Promise, it is an organization that provides temporary housing and meals to the homeless by housing them at places of worship for a week before moving them to another house of worship. One week of their time is spent at St. Jude's Church. The goal is to find meaningful employment and appropriate housing for these families. The Temple has obliged the Sisterhood to provide the dinner meals for that week. This will be one thing that I would like to coordinate, so that the next time St. Jude's Church is due to sponsor Family Services we are ready in the knowledge of which Sisterhood member(s) is/are going to provide dinner on what night. This is a time of year when tzedakah is emphasized, either in deeds or dollars, so please remember to give this holiday season whenever possible. I wish you all a joyous and prosperous New Year. L'Shana Tova!

Cathy Zitnick, Sisterhood President





## Visit the Helen Pappert Gift Shoppe

*The Sisterhood Gift Shop is filled with products for all your Judaic needs. All items are reasonably priced and wonderfully thoughtful gifts for birthdays, bar and bat mitzvot, anniversaries, or just to say "I love you."*

**Remember the sick and bereaved with cards, calls, and visits.**  
They help heal and comfort.

**Please call the Temple Office at (818) 843-4787 if a Temple Member is sick or hospitalized.**

## Havurah Happenings

### Havurah Simcha L'Chaim

Havurah Simcha L'Chaim members are mainly retired people. If you would like to join, please let me know. If you would like to be in a new Havurah, please let me know and we can try to get a new group started.

Please call me to discuss it.

Ruth Glick [818 780-9134](tel:8187809134)

## חבורה Havurah



### ***This Is Your Personal Invitation to Join Temple Beth Emet's Sisterhood***

Sisterhood is a group of friends who work together for our Temple, our children, and our community, in a very tangible way. Our President, [Cathy Zitnick](#), will be happy to hear from you. Call her at **(818) 292-7180** or e-mail: [cmarriott01@msn.com](mailto:cmarriott01@msn.com). She will be happy to acquaint you with what we do and find out what your interests are.

We are sure you will fit in and we will be happy to welcome you!

We meet the first Sunday of every month at 10:00 AM in Blum Hall. Please join us. Dues are only \$15 per year (commencing September of every year). Please fill out this form, cut it out and send it with your payment to:

TBE Sisterhood, c/o TEMPLE BETH EMET, 600 N. Buena Vista Blvd., Burbank, CA 91505; or just leave it with the Temple Office.

NAME \_\_\_\_\_ ADDRESS \_\_\_\_\_

PHONE \_\_\_\_\_ CELL PHONE \_\_\_\_\_ E-MAIL \_\_\_\_\_



## TEMPLE BETH EMET MEMBERSHIP "CHAI LIGHTS"



### October Birthdays



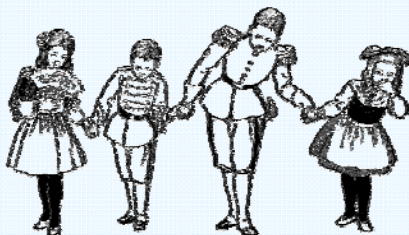
Joseph Tanner	October 1	Arturo Libal	October 12	Leona Zollman	October 25
Miranda Goldstein	October 3	Samantha Blank	October 14	Logan Smith	October 25
Ethan Yarus	October 3	Theida Salazar	October 15	Sarra Lerner	October 26
Isabel Frischman	October 6	Max Crosby	October 22	Nicole Fischer	October 27
William Frischman	October 7	Quinn Margolin-Moultrie	October 22	Ana Guerrero	October 28
Joshua Blank	October 8	Lynda Feldman	October 24	Ethan Cohen	October 29
Talia Shavit-Weiner	October 9	Ben Gordon	October 25	Oliva Goldstein	October 30



### October Anniversaries

*Harold Flom & Marsha Cohen-Flom October 9,  
Leslie Nathan & Michael Heiss October 25*

### TEMPLE BETH EMET CHOIR:



#### TAKE A BOW!

*Thank you for one again making our  
High Holiday Services so special!*

*Amy Belilov, Jackie Deschamps, Jim Ellfeldt, Debbie Fishel, Neal Goldstein,  
Jeanie Mintz-Kreyns, Jeremy Oldson, Dana Sapper, and Nancy Shavit-Weiner.  
Frank Watnick on violin.*

Cantorial Soloist and Music Director Robyn Kreisberg - Lay Cantor Kyle Orlemann  
Accompanist David Goldstein



SUNDAY	MONDAY	TUESDAY	WEDNESDAY	THURSDAY	FRIDAY	SATURDAY
				1 Sukkot begins	2 6:00 PM Pizza and Salad Night at the Temple ~ "Pizza In The Hut!"  7:00 PM Shabbat Family <b>Sukkot</b> Service	3 
4 9:00 AM - Noon <i>Religious School</i> 10:00 AM Sisterhood Meeting in Blum Hall 10:00 AM <i>Religious School Sukkot Brunch</i>	5 Last Day Of Sukkot 6:45 PM Yizkor Service 7:00 PM Simchat Torah Service 	6 7:00 PM Temple Board Meeting	7	8	9 7:30 PM Shabbat Service 	10 
11 9:00 AM - Noon <i>Religious School</i>	12	13	14	15	16 7:30 PM Shabbat Service 	17 
18 9:00 AM - Noon <i>Religious School</i> 9:30 AM Mens Club Brunch & Meeting  9:00 AM—10:00 AM RSPA Meeting	19	20	21	22	23 7:30 PM Shabbat Service	24 
25 9:00 AM - Noon <i>Religious School</i>	26	27	28	29	30	31 

**Coming Up Soon!**

In November: RSPA Meeting in Blum Hall from 9:00 AM—10:00 AM.  
Thanksgiving, of course!



In December: Hannukah begins on Sunday, December 6th!





# MONTHLY YAHRZEITS HONORING THE MEMORY OF LOVED ONES

NAME	REMEMBERED BY	DATE	NAME	REMEMBERED BY	DATE
<b><u>At Temple on Oct. 2, 2015</u></b>			<b><u>At Temple on Oct. 23, 2015, Continued</u></b>		
Msgr. Martin Keating	The Congregation	10/01	May Lubow	Lester Pink	10/20
Ann Pollack	Roger Pollack	10/04	Yetta Pink	Lester Pink	10/21
Harvy Ringel	Mark Ringel	10/04	Yetta Pink	Nathan Lubow	10/21
Steven Merrill	Andrew Merrill	10/04	Thomas Landolfi	Mary Manocchia	10/21
<b><u>At Temple on Oct. 9, 2015</u></b>			Daria Grosberg	Samantha Blank	10/21
Jeanette V. Kramer	The Kramer Family	10/05	Joan F. Strauss	Howard Strauss	10/22
Robert R. Beltzer	Yvonne Beltzer	10/05	Fanny Rosenberg	The Congregation	10/22
Anna Poddig	Monica Pink	10/06	Mary Reinhart	Dottie Pierce	10/22
Vaughn Verdi	Barry Verdi	10/06	Samuel Sopasnik	Judith Antelman	10/23
Renee Lawrence	Amy Lawrence	10/06	Samuel Sopasnik	Marlene Flowers	10/23
Elizabeth Teller	Mickey Teller	10/07	Vicki D. Strauss	Howard Strauss	10/24
Irwin Eugene Siegel	Lisa DeLuca	10/07	Larry Weinfeld	Brad Weinfeld	10/24
Nasrat Hakakha	Mina Sobel	10/08	Edythe Bresn	Ruthe Granat	10/24
Anne Mundon	Cheryl Mundon	10/09	Bill Babroff	Leslie Babroff	10/24
Nan Gold	The Gold Family/The Congregation	10/10	William Aronoff	Naomi Aronoff	10/24
Sarah Solomon	Nassim Ferris	10/10	<b><u>At Temple on Oct. 30, 2015</u></b>		
<b><u>At Temple on Oct. 16, 2015</u></b>			Eva Resnick	Fred Bayer	10/26
Irving Jacob	Rina Shavit	10/11	R. L. Manocchia	Mary Manocchia	10/26
Conor Lynch	Vicki Margolin	10/11	Joseph Testa	Ann Testa	10/26
Joseph Schanzer	Orven Schanzer	10/11	Dora Bigley	Bruce Bigley	10/26
Dr. Harold Resnick	Sid Resnick	10/11	Robert Margolin	Neil Margolin	10/27
Irma Karchmer	Sylvia Schuster	10/12	Sheldon G. Schorr	Richard Schorr	10/28
Helen Margolin	Neil Margolin	10/12	Alan A. Mandel	Shelly Barton	10/28
Rabbi Albert Shulman	The Gold Family/The Congregation	10/12	Elmore Leland Rogers	Roxanne Oliver	10/28
Marvin Zweier	Jean Zweier	10/12	Rae Brykman	Harriet Schwab	10/29
Dorothy Conner	Harvey Phillips	10/13	Henry Shapiro	Meyer Nudell	10/29
Solomon Sorkin	Sofia Brook	10/13	Eva Pandrowitz	Harriet Feinstein	10/30
Zeke Manners	Susie Manners	10/14	Jennie Nudell	Meyer Nudell	10/30
Ida Freemel	Matt Johnson	10/15	Leah N. Factor	The Congregation	10/30
Berthold Kleinberg	Carole Eisinger	10/15	Frances Rose	Eileen Martin	10/30
Abraham Mazor	Howard Strauss	10/15	Roger Wasserman	Julie Wasserman	10/31
Robert Sharofsky	M/M Don Spielvogel	10/15			
<b><u>At Temple on Oct. 23, 2015</u></b>					
Rev. Harry Cosson	Sybil Bracher	10/18			
Paul Stein	Ron Dacher	10/18			
William Schneider	Sybil Baitz	10/19			
Gabriel Markado	The Markado Family	10/19			
Solomon Friedberg	Stanley Franklin	10/19			
Els Valk Gold	The Gold Family/The Congregation	10/19			
Bernard Cohen	Robert Cohen	10/20			
May Lubow	The Congregation	10/20			

## Yahrzeit Donations

Sheila Abramson remembering Mark and Bennett Abramson

Margery Brown remembering Irene Williams and Susane Moore

Fran Bernstein remembering her grandfather, Samuel Polakoff

LaVerne & Robert Cohen remembering Morey Cohen

Beverly Genereux remembering Doris Katchen Rose

Darlene Holsinger remembering Albert Green

Les & Monica Pink remembering their niece, Debra Lubow Zeid

Monica Pink remembering her Paternal Grandfather, Albert Sommerfeld

Monica Pink remembering her Paternal Grandmother, Laura D. Sommerfeld.



"The Temple With a Heart"

# SUKKOT AT TEMPLE BETH EMET

**Pizza Dinner**  
in Blum Hall  
**and**  
**Shabbat Services**  
in the Temple sukkah  
October 2, 2015  
Dinner 6:00PM\*  
Services 7:30PM

\*Adults \$5, children free—  
reservations required by the  
previous Wednesday. RSVP to  
Barbara Bolter at (818) 761-  
3116, or Laura Goldstein at  
(818) 761-3116





**PLAN AHEAD. IT'S A GIFT OF LOVE.**

**Rebecca O'Brien,**

Advanced Planning Representative

**800-600-0076 ext 337**

[robrien@mountsinaiparks.org](mailto:robrien@mountsinaiparks.org)

**Memorial Parks and Mortuaries**

**Hollywood Hills FD1010**

5950 Forest Lawn Drive

Los Angeles

**Simi Valley FD1745**

6150 Mount Sinai Drive

Simi Valley

**Dedicated to the entire Jewish community**

Mon.-Fri.  
9-6



Saturday  
9-5

**PHOTO • DIGITAL • VIDEO**

**Henry Gross**

*Certified Photographic Consultant*

519 N. Glenoaks Blvd.  
Burbank, CA 91502

Phone: (818) 841-5011  
Fax: (818) 845-3331

**Tribute Cards**

Tribute cards are always in order for happy or sad occasions. These cards are a wonderful way to remember or honor someone.

Did you know that you can get on an automatic mailing to those in need of well wishes by contacting the office?

A card will automatically be sent from you in your name to those in need of healing and an amount of \$3 will be added to your bill each time a card is sent in your name.

**Contact the Temple Office at:  
818 843-4787**



*HAPPY AUTUMN!!!!*



***Super-Transportable***

***SuperLight***  
**ELECTRIC SCOOTER**

- 100 lb Weight
- 24 lb Heaviest Part
- 250 lb Capacity
- 12 Mile Range
- 1 Minute Assembly
- Air Travel Friendly
- Fits in Car Trunk
- Indoor/Outdoor
- Medicare Approved
- No Tools Required



**AA Mobility**

**[www.aaamobility.com](http://www.aaamobility.com)**

**Toll Free: 1-800-968-7464**



# Our Sisterhood

**BROWSE**

**OUR**

**TEMPLE BETH EMET  
GIFT SHOP**



**TOP QUALITY TALLITS  
FOR MEN, WOMEN,  
BAR & BAT MITZVAH**

- All with matching bag and kippot.
- All at reasonable prices

## MAKING A WAREHOUSE STORE RUN?



**PICK UP AN EXTRA  
PACK FOR US!**

Make a donation of a pack of paper towels for our kitchen or bathrooms, or bathroom tissue, a case of grape juice, a bottle of dishwashing liquid, a case of copy paper, or some of the other things we use at Temple!



You'll be helping the Temple and saving someone from making an extra trip.



LET'S TURN OUR POCKET CHANGE INTO REAL CHANGE!

Who is Just5Club? J5 is a nonprofit organization helping those who are silently struggling financially. In November of 2013, six young professionals came up with a simple idea; a concept that beautifully ties the act of giving with uniting individuals from all corners of the world. At J5, we believe in the power of unity, where each individual has the power to make a difference. When people are united with one common goal in mind, even the smallest amount can make a significant impact in the world we live in today.

**Here's how it works, it's easy!**

1. Log on to [www.j5club.org](http://www.j5club.org)
2. Sign up to become a Just5 member with your credit card
3. Each month, your credit card is charged JUST \$5.
4. At the end of every month, all the money is gathered and donated to a family or individual in need of financial assistance. Whether it's an emergency of being evicted from one's home or payment for medical bills, such as cancer treatment, J5 is there to help!

Give those in need a chance to go  
from **HOPELESS** to **HOPEFUL**

it only takes \$5 a month



[www.J5Club.org](http://www.J5Club.org)

Dear Readers: I wanted to feature this page last month, as September 19th is the actual date that, a year ago, we lost one of the our dearest and best friends of our Temple. Jerry Engelberg. It seems surreal that a year has passed so quickly. There was so much in the last issue, I didn't have room. So, here it is. . . Hold onto your loved ones and let them know you care. Don't delay. That's my advice to you. In honor of Jerry, I brought back the Tribute Certificate, which was his idea as a service to our TBE family and also a source of revenue to help this little newsletter continue. I hope you will want to honor or hold in memoriam someone (or "someones") special to you. I am also going to run his very last column for the September 2014 issue. Here it is...

Barbara Lux  
Editor, Chai Times

### **JERRY'S LITTLE CORNER OF THE WORLD - Originally Published in the Chai Times in Sept. 2014**

It was a blessing seeing so many Boy Scouts, proud parents and friends descending upon



**OUR** Temple and help an Eagle Scout candidate complete his requirements for the rank of Eagle Scout.

I also want to thank Rabbi, Ira and Josh for helping with the cleaning, organizing and throwing out useless items from **OUR** Temple. Still, much work needs to be done to make our Temple a place of which we can be proud.

More burned out lights need to be replaced, broken sockets in our Memorial Boards need to be replaced, the door to the courtyard (from Blum Hall) needs to be taken off, repaired and reinstalled. A water shut-off valve to the building needs to be replaced. Pine needles are already filling our gutters, a downspout, needs to be repaired, the drain in the parking lot needs some cement work. The list goes on and on. . . If **YOU** have any expertise in any way, in any field, and would like to help, please let me know. I would really appreciate your help.

So, how did you like the Ice Cream Social? Just remember, all proceeds, after expenses, goes into a special fund to replace **OUR** Temple air conditioner, when it fails. It will probably be in the \$10,000+ range to replace it. Additional donations can be made by sending a check to the Temple, made out to: TBE Sisterhood (writing on the memo line of your check, TBE Air Conditioning Fund). That will ensure your funds will get where they are intended to go.

September will be a busy month. Religious School starts on Sunday, September 7th, at 9:00 AM. The Sisterhood meeting is also on the 7th, starting at 10:00 AM, and at 11:00 AM, Rebbetzin Mina Sobel will be the special guest speaker for a women's presentation. The Men's Club will hold its' quarterly meeting on Thursday, September 18th at 7:00 PM, and their sponsored "Back To School Brunch" will be held on Sunday, the 21st at 11:00 AM. Pizza Night will resume on Friday, September 5th at 6:00 PM. You can refer to this issue's calendar on Page 10.

As I mentioned in last month's article, I need a few good people to help move and set up "Temple St. Jude's" for the High Holidays. Set your clocks or calendars for Sunday, September 21st, 2014, at 12:00 Noon to help load, drive to St. Jude's for **OUR** High Holidays. (Note: repetition is supposed to be good!)

I don't know why people think it's a joke (or don't take it seriously), when we ask that articles (or photos) for the *Chai Times* be submitted by the 15th of each month. It takes many hours for Barbara to put together **OUR** newsletter, and it's not funny when articles or information is submitted later than the 15th deadline. I am going to ask Barbara to NOT include anything that is submitted late. If you received your Chai Times late, it was caused by those inconsiderate members who submitted articles or information after our deadline. Start on your article on the 1st of the month, thus you will have many opportunities to edit, revise or otherwise modify your article before the 15th of the month. Submit your article, information or photos via the Internet to Barbara's email address: [formerlygidget@gmail.com](mailto:formerlygidget@gmail.com). She will take it from there. (You can't blame it on the slow mail!!)





In memoriam tribute of the one year passing of our dear friend, Jerry Engelberg, on September 19th, I am bringing back the Tribute certificates for you. Please see the example below.

**TRIBUTE CERTIFICATE**

Here is an idea you can implement to honor, congratulate, wish a happy birthday, anniversary, a get well wish, Yahrzeit, wedding, birth announcement, graduation, Bar or Bat Mitzvah. Whatever occasion you can think of, this is a delightful option.

Have a Tribute Certificate printed in the Chai Times!

A half-page costs only \$25.00

A full page costs only \$50.00

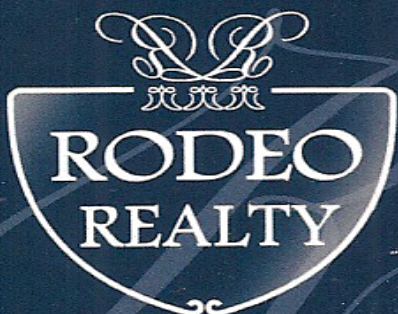
Extra donations in honor of the occasion are welcome.

Honor that someone special.

While honoring someone special, you will also be supporting Temple Beth Emet.

Tributes need to be requested by the 15th of the month for the next issue.





*Fine Estates®*

*Franklyn Burns*

State of California Lic. RE Broker  
Realtor® Consultant  
DRE License #00424940

15300 Ventura Blvd. #101  
Sherman Oaks, CA 91403

Business: 818.986.7300 x101  
Cell: 800.897.0006  
Fax: 818.986.1066

FRANKBUSINLA@VERIZON.NET  
WWW.FRANKBURNS4RE.COM

## NoHo Mailboxes

5062 Lankershim  
Blvd.  
N. Hollywood, CA  
91601

818-506-7744  
Scott & Ezra Bergstein

20% off FedEx  
Shipping for

- FedEx, UPS, DHL, USPS & Courier Service
- Private Mailboxes
- Packing, Shipping & Office Supplies
- Prepaid Services, Gift & Phone Cards

## IRA L. GOLDSTEIN

Attorney at Law

3500 West Olive Avenue, Suite 300  
Burbank, California 91505  
(818) 845-1421

Estate Planning—Probate—Family Law  
Civil and Business Matters

### Chai Times Ad Rates

Ad Size	Monthly	Annually
1/8 page	\$7.50	\$ 70
1/4 page	\$15	\$180
1/2 page	\$25	\$300
3/4 page	\$30	\$360
Full page	\$50	\$600

Please contact the TBE Office to place your ad! You'll be glad you did.

The Chai Times is posted on the Web and reaches hundreds of TBE members in the San Fernando Valley area and surrounding areas (even as far as Alaska!).



### "LIKE" US ON FACEBOOK!

Check out the Temple Beth Emet of Burbank Facebook page! Share relevant Jewish issues, timely messages, and pictures with your Temple Family and follow happenings at TBE, as well.



Shop at Ralphs? Register your reward card at [ralphs.com](http://ralphs.com) and add TBE as your organization! Or register with eScrip.com and support TBE when you shop! On or after September 1st, your reward card designation should be renewed. You can renew online, or pick up a "barcode scan" letter at Temple. Thanks and happy shopping!