

November 2016



Chai Times

Temple Beth Emet of Burbank

"The Temple With A Heart"

"If you can keep your head while all around you are losing theirs. . ."

Rudyard Kipling

I am writing this column with some trepidation. Sixteen years ago I wrote a Chai Times column which was anti the Electoral College. It cost us a couple that had been Temple members from before I came to Temple. In a tersely written note, the husband wrote, "I feel it is not the Rabbi's place to talk politics with the congregation."



So, please forgive me, but this year's election is too important not to comment on. We Jews have gained many freedoms in America that were denied us in Europe or Asia or the Middle East (pre-State of Israel, of course, and truly the most important one was granted us by the Declaration of Independence, when it said that **"the Right of the People... to institute new Government, laying its foundation on such principles and organizing its powers in such form, as to them shall seem most likely to affect their Safety and Happiness."** However, not all states of the original 13 extended that right to our people. It was Maryland, where Jews were not allowed to vote or hold office until 1826. On a Federal level, we were allowed to vote. But that still means we were denied our constitutional rights for 56 years. Or for more than 25 % of America's existence.

That is why it amazes me that our people don't vote more. Not more often, that's illegal, no matter

(Continued on Page 4)



Pizza Night is on the first Friday of each month at 6:00 PM, followed by the Family Shabbat Service at 7:00 PM.

This month Pizza Night and Family Service is on November 4th. Please call the Temple Office or Barbara Bolter to reserve your dinner by Wednesday of the week you plan to attend.



This month's book club meeting will be on November 29th at 7:00 PM at Temple.

Check out our TBE Book Club!!! (See Flyer on page 11 for details.)



We have opened our Early Childhood Center! Enrollment is still open! (See the message from our new Director, Elaine Rosenfield on page 6 and the Photo on Page 7.)



Rabbi Mark is a regular contributor to the **In Theory** column, which appears in the Burbank Leader in print and online at: <http://www.burbankleader.com/opinion/religion>



Temple Beth Emet (House Of Truth) ORGANIZATION

Religious Leadership

Rabbi Mark H. Sobel
Lay Cantor, Kyle Orlemann
Music and Choir Director,
Robyn Kreisberg

Rabbi Emeritus William M. Kramer Z"L*
*His memory will always be a blessing to us.

2015-2016 Officers and Directors

Officers

Ira L. Goldstein, *President*
David Goldstein, *Vice President*
Cathy Zitnick, *Treasurer*
Shirley Abramson, *Secretary*

Directors

Barbara Bolter
Dan Gura
Eileen Martin
Herbert Murez
Martin Sultan
Ken Watnick

Men's Club President

Ron Kurtz

Sisterhood President

Cathy Zitnick

Morris Gold Religious School Faculty

Rabbi Mark Sobel, Education Director
Shirley Kirschenbaum, Grades K-1
Tanya Termechi & Barbara Lux, Grades 2-3
Tanya Termechi & Barbara Lux, Grades 4-5
Staff - Rabbi Mark Sobel, Grades 6-7
Mahnaz Termechi, Bar/Bat Mitzvah Preparation
TBD, Confirmation (Grades 8-10)
Robyn Kreisberg, Music
Miranda Goldstein, Teaching Asst.

Religious School Parents Association

David Goldstein, President

Preschool

Director Eileen Rosenfield,

Office Staff

Office Manager/Secretary,
Victoria Gaffney
Religious School Office Assistant,
Edith Dague

Committee Chairs

Calendar and Usage

Victoria Gaffney

Communications

Barbara Lux

Education

David Goldstein

Membership

Barbara Bolter

Ritual

Ira L. Goldstein

Coordinators and Volunteers

Adult Education

David Goldstein

Chai Times Editor

Barbara Lux

Children's Hospital LA Toys

Shirley Abramson

College Outreach

Cathy Zitnick, Chairman

Hannah Cline

Shirley Abramson

Food Drives

TBD

Havurahs

Ruth Glick, (818) 780-9134

Library

Barbara Lux/Bill Abramson/Logan Smith

Marquee

Craig Weisman/Rabbi Mark Sobel

Mitzvot

TBD

One Call

Victoria Gaffney

Oneg Coordination

TBD

Reach Out

Craig Weisman/Rabbi Mark Sobel

Technology

TBD

Historian

TBD/Rabbi Mark Sobel

Youth Group Coordinator (BBYO: AZA & BBG)

TBD

Webmaster

TBD

Temple Beth Emet Office Hours

Monday-Thursday—9:00 AM-noon

Friday & Sunday—9:00 AM-1 PM

Saturday closed

The office is closed in observance of the following holidays:

*New Year's Day, President's Day,
First day of Pesach, Memorial Day,
Independence Day, Rosh Hashanah,
Yom Kippur, Thanksgiving*

Call the Temple office at (818) 843-4787 to
contact Temple Staff/volunteers.

Your message will be forwarded to the

CHAI TIMES

Chai Times is the free, monthly newsletter of Temple Beth Emet of Burbank, delivered by email to members and available at www.TempleBethEmet.com.

Mailed hardcopies are available for an annual TBE donation payable through the Office.

Editable article submissions, photos and feedback are encouraged and due by the 15th of the month and may be emailed to:

chaitimes@TempleBethEmet.com or delivered to the Temple office.

Submissions will be published based on space available, relevant content, and at the discretion of Editor Barbara Lux, Temple Officers and Directors.

Follow Temple Beth Emet of Burbank

View webcasts at

<http://www.ustream.tv/discovery/live/all?q=bethemetofburbank>

"Like" our Facebook Page at

<https://www.facebook.com/TempleBethEmet?fref=ts>

Donation Made to the
Temple This Month

Mary Manocchia made a donation for the Sisterhood. Thank you, Mary!

If you have any suggestions or ideas on how we can better serve our members, please call the office or email us at:

office@Templebethemet.com

PRESIDENT'S MESSAGE - November 2016



It was bittersweet when we brought down the curtain at St. Jude's after Yom Kippur last month. It is always a relief to come to the end of the High Holiday services. It is our biggest "show" of the year and the planning and implementation starts more than a month before the choir starts the opening neigun. When the final blow of the shofar sounds and people make their way out of the sanctuary, we pause for a sigh of relief that the services went well, and then begin the process of returning St. Jude's to its prior state and getting everything back "home."

St. Jude's has been our High Holiday home for 16 years, and since they extended that first invitation our two congregations have enjoyed a special and growing friendship. We have become family to each other.

This past summer, Father Chuck retired from St. Jude's. Buzz Ayers, Chief Ward of the church Vestry, assured us that we were again welcome for the High Holidays.

St. Jude's congregation has shrunk over the years to the point where they have only a few dozen families. After Father Chuck's retirement, the leadership prayerfully deliberated the future of the church. They have decided to merge with St. David's Anglican Church in Burbank.

The future of the St. Jude's campus at Sixth and Olive is uncertain. Our St. Jude's friends say that it is their prayer that the combined congregation will find its way back. Wherever they are, we know they will bring the love and spirituality of their special community with them, and we intend to maintain a relationship with them. Who knows but that this will present us with opportunities to make new friends and do more things with our neighbors in the Burbank ecumenical community? In an adaptation of our traditional prayer for travelers, "may it be Your will, Adonai, that You should lead them in peace and direct their steps in peace, and guide them in peace, and support them in peace, and cause them to reach their destination in life, joy, and peace."

What this means for us is that we cannot assume we will have a large facility for High Holiday services next year. Attendance at services has declined over the years to the point where we believe we can hold services on our own facility. We have already begun examining how we can set things up to accommodate everyone and look for ways to take advantage of being in "our own house" to make our service even more welcoming and meaningful.

With every ending there seems to be a beginning, and our new preschool, in operation only a couple of months, has really taken off. If you go to the Temple Beth Emet Preschool Facebook page you can see pictures of the fun and learning that takes place daily. Plans are being made for a new two year old class. It took us many years and a couple of false starts, but it looks like we have created something really special. The "Temple with at Heart" now has a "Preschool with a Heart!"

As Thanksgiving approaches, our Temple can be thankful for both the friendship we enjoyed with the community of St. Jude's Anglican Church and the future promise of the Temple Beth Emet Preschool. Of course, all of us at Temple Beth Emet are thankful for our own Temple family. I wish all of you a very Happy Thanksgiving, and may Adonai help us see and appreciate the blessings in our own lives, and help us to be a blessing to others.

-- IRA L. GOLDSTEIN, President



(Continued from page 1)

what Mayor Daley of Chicago used to say.

This year's presidential election is complicated! Neither candidate has a positive reputation. The country is split on so many things that this Presidential election just adds to the rancor.

I have a thought. Don't vote for the candidate for President. But vote in your local, state and congressional elections. As Ted Cruz said, "Vote your Conscience." Research the candidates in your neighborhood, congressional district, and the California Senate Race. Then choose.

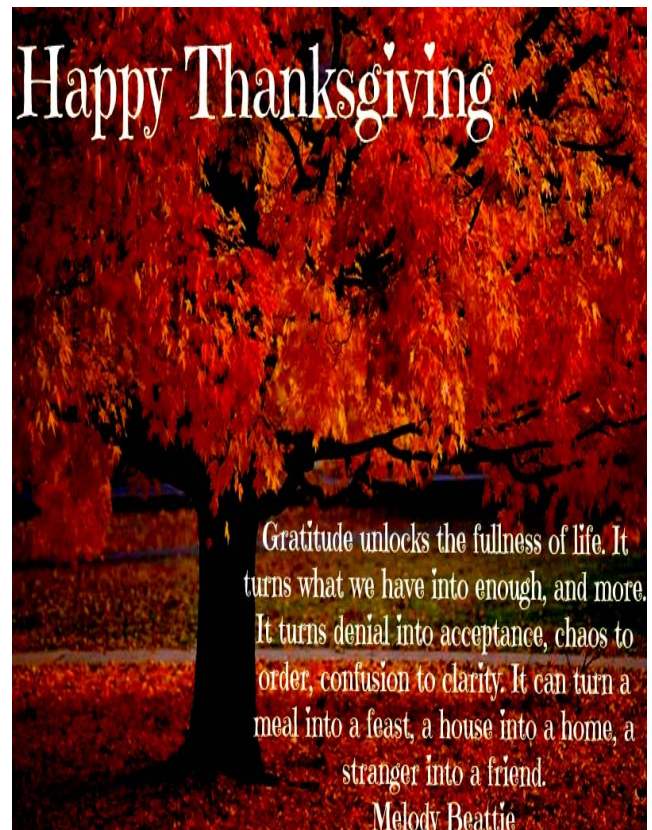
To paraphrase Rabbi Kramer, "To be a good Reform voter, you have to know all about the Orthodox candidate to make an intelligent decision about what you want and what you don't want." He actually said it about being a good Reform Jew, but you get the point.

I will go on record, while I think the Donkey's party is closer to my ideas, I have voted for the Elephant in the room as well, and I am always an Independent voter.

Please let your voice be heard,

B'ahavah,

Rabbi Mark



Our Religious School students have been observing and learning about all of the Fall holidays during the month of October. Children's High Holiday Services were held at St. Jude's during the morning services of both Rosh Hashanah and Yom Kippur and were led by Teacher Mahnaz and parent volunteer, Mary Gurra. The students also celebrated the High Holidays with apples and honey provided by the Parents Association on October 9th. Our annual Religious School Sukkot Breakfast was held on October 23rd; after spending time that morning under the Sukkah set up in the courtyard and learning about the Lulav and the Etrog, the students enjoyed a breakfast of bagels and fruit which was provided by K/1 Room Parent, Leora Dreyfuss and other parents of the K/1 class. And on October 30th, the students celebrated the holiday of Simchat Torah by literally wrapping themselves in the Torah, as they unrolled one of our Torah scrolls in the Sanctuary with each student standing inside it and helping to hold it up.



A reminder that our Adult Education series begins this month on Tuesday November 15 at 7:00 PM in Blum Hall and will continue on the 3rd Monday of each month through March. The topic for this year's series which, as always, was suggested by a member of the congregation will be "**What Does Judaism Say About.....**"; the subject of November's class will be **Spirituality in Prayer**. Classes are open to the public and there is a small suggested donation of \$5 per class (or just \$20 for the entire series of 5 classes). See our upcoming classes on Page 8 of this issue.) Please join us for what promises to be a series of lively and thought provoking discussions



A Place for Learning

ADULT EDUCATION SERIES 2016-2017

WHAT DOES JUDAISM SAY ABOUT . . . ? **A 5 PART SERIES PRESENTED BY RABBI MARK H. SOBEL**



November 15 - Spirituality in Prayer

December 20 - Meaning in Mundane

January 17 - Life's Unique Purpose

February 21 - Power of Speech

March 21 - Are We Meant To Be Perfect?

THE SERIES IS FREE OF CHARGE AND OPEN TO THE PUBLIC, DONATIONS SUGGESTED.
CONTACT THE TEMPLE OFFICE FOR MORE INFORMATION.



This morning, as I do every morning, I was standing at the open door to the parking lot waiting for Temple Beth Emet's littlest learners to arrive, I thought about just how far we've come in the past five weeks. We started a preschool with six children and we now have 13! All this with one banner and word of mouth.

As I watched the cars coming into the parking lot – one after the other, and saw happy children and happy parents getting out of their cars, eager to show a new backpack, share a story, talk about a sleepless night, bring a bowl of still-rising dough so our little ones could make challah for Shabbat, and then run into the classroom to see Hayley and Gina, I knew we were doing something so important. I remember thinking how quiet it is at the temple each morning...not anymore!

Best regards,

Elaine Rosenfield
Preschool Director



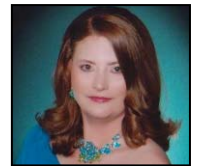
Fun and learning happen every day at our preschool.

Space is still available!



Dear Members:

The Parking Lot sale has been re-scheduled for Sunday, the 6th of November. We will have the ladies and their goods for sale in the Parking Lot portion of the Temple. The Temple will be open for Sunday school and there will be a Sisterhood lady attending to the Gift Shoppe inside the Temple in case anyone wants something new or a card for Hanukkah.



We will have a food truck parked in front of the Temple on Buena Vista Street starting late morning in time for the lunch crowd. Please feel free to stop by and order yourself something to eat as we will get a percentage of the sales from the truck. The Parking Lot Sale will be from 8:00am until 1:00pm, but the ladies with used items to sell will be there early in the day setting up. So, those of you with children in the Sunday school, please remember to park on Clark Street or on Buena Vista and walk your child into the Sunday school that day, as there will be no parking in the parking lot itself. The ladies will be selling everything from clothing, jewelry, bedding, bath towels, kitchen utensils, small appliances, silver, and china for the kitchen. I have not heard anyone bringing furniture as yet, but don't be surprised if you see some furniture there as well. (So I am imagining that the best bargains will be had between 12:00 Pm and 1:00 PM.)

Our annual Honey Box sale ran from Rosh Hashanah through to Yom Kippur. We made a profit for the Sisterhood, so we are quite pleased about our Honey Box sale. We thank you for the donations to the military, as we want as many Jewish servicemen and women to know that we appreciate what they are doing and that they have a second home with Temple Beth Emet.

I have a very busy schedule, so this last week when I had some time to catch up on my reading, I picked up a Jewish Journal from my stack of previous issues that I hadn't gotten around to reading. One thing about the American culture is that in the last twenty years it seems that we have named a day after something, or a month after something. The reason that I say this is because the issue I picked up to read was from October of last year, and one of the things that I noticed was that November has been deemed *Interfaith Family Month*. The reason I noticed this is because there were two ads in the Jewish Journal from non-profit organizations that help to bridge the gap between faiths. The first ad I saw was from **Interfaith Family Los Angeles**. This organization is sponsored by the Jewish Community Foundation Los Angeles, several Reform Synagogues, Jewish Community Centers, and other Jewish non-profits in Los Angeles County. I went on their website and they have social events and workshops which help the gentile spouse become more familiar with Jewish beliefs and practices. They are having a convention in Philadelphia on the 26th of November at the National Museum of American Jewish History for an important national conversation. I was so glad that I looked up that website, because I have never even heard of the National Museum of American Jewish History. If I ever get to Philadelphia I know this museum will be one of my stops. In case you are interested in their program, you can call (213) 973-4072 or go to their website which is:

www.interfaithfamily.com/LosAngeles. The second ad I saw was for the annual **Catholic-Jewish Women's Conference**. The goal of the Catholic-Jewish Women's Conference is to promote understanding and good fellowship in the Greater Los Angeles area between women of these two vital religious traditions. The organization is open to all Catholic and Jewish women. Others interested in Interfaith Dialogue are also invited to attend. This conference started in 1977 and has been held annually on November 11th (Veterans' Day). This is their 40th annual conference and their topic this year is: **Our Planet in Peril: Repairing the Earth Through the Lens of Faith**. It will be held from 8:30 AM to 3:30 PM at Valley Beth Shalom in Encino. If you would like to check out this organization or go to their conference, you can call (818) 609-7070 or go to their website which is: www.catholicjewishwomenla.org. The reason these two events caught my attention is that there are many members of our Temple, even people on our Board, who are part of interfaith families.

In closing, I would like to extend my thanks to Rabbi Mark Sobel. For those of you who were not able to attend the afternoon Yom Kippur service, the Rabbi called upon the Sisterhood members present to come up and read the prayers that are said before and after the reading from the Torah. The Sisterhood ladies were so grateful to be acknowledged for all the hard work we do for the Temple, that they couldn't stop talking about it. Rabbi Sobel is very welcoming of all people who come to Temple events, no matter their race or religious affiliation. He puts no pressure on people to convert, he welcomes people into the Temple, and he lets them know that Temple Beth Emet can be considered their second home. We are all very blessed to have him as our Rabbi.

May You All Have a Wonderful Year,

Cathy Zitnick
Sisterhood President





Do You Have a Son and/or Daughter In College?



Temple Beth Emet has started a program to connect with our students attending a College. We would like to help them to continue their Jewish way of life and offer them additional support. This way, they will always have an open line of communication with our Rabbi, should they have questions or need direction; and we will remind them of their link to Israel and to keep connected to the Jewish Community. After college, we hope to have them join our Temple, as an adult.

Please send e-mail and give me the following information:

The name of the Student;

Class Level;

Address;

Name of the University, and;

If the Student is a member of any organization or club on campus.

The Temple will send a care-package for each holiday, as a gift to the Student with a calendar of events at the Temple for each month. The Student will be invited to all events sponsored by the Temple. We would like to encourage the Student to return to the Temple as often as they wish; as the Temple would like to offer itself as a second home and place of Jewish learning. I look forward hearing from you!

Thank you,

Cathy Zitnick
Chairman
TBE College Outreach

Shop at Ralphs? Register your reward card at ralphs.com and add TBE as your organization! Or register with eScrip.com and support TBE when you shop! On or after September 1st, your reward card designation should be renewed. You can renew online. Thanks and happy shopping!



**“LIKE” US ON
FACEBOOK!**

Check out the Temple Beth Emet of Burbank Facebook page! Share relevant Jewish issues, timely messages, and pictures with your Temple Family and follow happenings at TBE, as well.

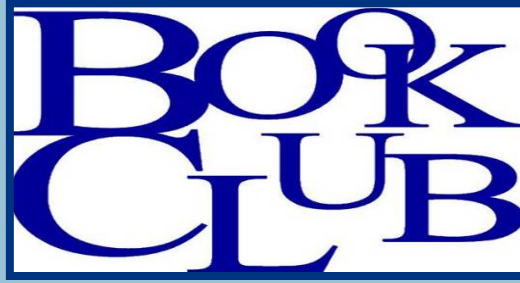
Tribute Cards

Tribute cards are always in order for happy or sad occasions. These cards are a wonderful way to remember or honor someone.

Did you know that you can get on an automatic mailing to those in need of well wishes by contacting the office?

A card will automatically be sent from you in your name to those in need of healing and an amount of \$10 will be added to your bill each time a card is sent in your name.

**Contact the Temple Office at:
818 843-4787**



We have a wonderful new Jewish book club at Temple!

Conducted by Fran Bourne-Johnson.

Where: Blum Hall at TBE

When: Tuesday, November 29, 2016 7:00PM to 8:30 PM

What is the book we will read and discuss: **Rashi's Daughters Book II: Miriam: A Novel of Love and the Talmud In Medieval France** by Maggie Anton

Where to get the book: The book is available on Kindle and Amazon.com, as well as local libraries. Please read the book and be prepared to discuss it.

Cost of Participating: Free!

Synopsis: ***The second novel in a dramatic trilogy set in eleventh-century France about the lives and loves of three daughters of the great Talmud scholar.**

The engrossing historical series of three sisters living in eleventh-century Troyes, France, continues with the tale of Miriam, the lively and daring middle child of Salomon ben Isaac, the great Talmudic authority. Having no sons, he teaches his daughters the intricacies of Mishnah and Gemara in an era when educating women in Jewish scholarship was unheard of. His middle daughter, Miriam, is determined to bring new life safely into the Troyes Jewish community and becomes a midwife. As devoted as she is to her chosen path, she cannot foresee the ways in which she will be tested and how heavily she will need to rely on her faith. With *Rashi's Daughters*, author Maggie Anton brings the Talmud and eleventh-century France to vivid life and poignantly captures the struggles and triumphs of strong Jewish women.

Visit the Helen Pappert Gift Shoppe

The Sisterhood Gift Shop is filled with products for all your Judaic needs. All items are reasonably priced and wonderfully thoughtful gifts for birthdays, bar and bat mitzvot, anniversaries, or just to say "I love you."



Remember the sick,
recovering and bereaved with cards,
calls, and visits.

Please say prayers of
Refuah Sh'leimah for:

Sylvia Sutton

**Stuart Friedman, recovering from
surgery**

**Martin Zitnick, father of Cathy Zitnick,
hospitalized**

They help heal and comfort.
Please call the Temple Office
at (818) 843-4787 if a

Havurah Happenings

Havurah Simcha L'Chaim

Havurah Simcha L'Chaim members are mainly retired people. If you would like to join, please let me know. If you would like to be in a new Havurah, please let me know and we can try to get a new group started.

Please call me to discuss it.

Ruth Glick [818 780 9134](tel:8187809134)



**WE ARE BACK TO OUR PIZZA NIGHT /
FAMILY SHABBAT SERVICE ON THE
FIRST FRIDAY OF THE MONTH. IT
STARTS AT 6:00 PM.**

**CALL THE TEMPLE OFFICE OR
BARBARA BOLTER (818) OR LAURA
GOLDSTEIN (818) TO RESERVE YOUR
SPACE FOR PIZZA NIGHT. WE HOPE TO
SEE YOU THERE!**



November Anniversary

Dan & Mary Gura

Joel & Sarah Lava

November Birthdays

Bert Goldberg	November 3
Yoni Fogelman	November 6
Emily Mintz-Kreyns	November 6
Shirley Abramson	November 11
Sylvia Sutton Sunday	November 20
Maxwell Wolloff	November 21
Morris Bolter	November 25
Jennifer Franklin	November 27
Greg Dorfman	November 30

Join the Sisterhood!

This Is Your Personal Invitation to Join Temple Beth Emet's Sisterhood

Sisterhood is a group of friends who work together for our Temple, our children, and our community, in a very tangible way. Our President, **Cathy Zitnick**, will be happy to hear from you. Call her at **(818) 292-7180** or e-mail: cmariott01@msn.com. She will be happy to acquaint you with what we do and find out what your interests are. We are sure you will fit in and we will be happy to welcome you!

We meet the first Sunday of every month at 10:00 AM in Blum Hall. Please join us. Dues are only \$15 per year (commencing September of every year). Please fill out this form, cut it out and send it with your payment to: TBE Sisterhood, c/o TEMPLE BETH EMET, 600 N. Buena Vista Blvd., Burbank, CA 91505; or just leave it with the Temple Office.

NAME _____ ADDRESS _____ CELL PHONE _____



November 2016

HESHVAN/KISLEV 5777



SUNDAY	MONDAY	TUESDAY	WEDNESDAY	THURSDAY	FRIDAY	SATURDAY
	Rosh Hodesh	1 8:00 PM Board Meeting Rosh Hodesh	2	3	4 6:00 PM Pizza Night 7:00 PM Family Service 	5
6 9:00 AM Religious School 8:00 AM - 1:00 PM TBE Sisterhood Parking Lot Sale Daylight Savings Time Ends	7	8	9	10	11 7:30 PM Shabbat Service  Let's We Forget Remembrance Day Veteran's Day November 11	12
13 9:00 AM Religious School	14	15  No kidding.	16	17	18 7:30 PM Shabbat Service	19 Gobble, Gobble Something Else! 
20 9:00 AM Religious School	21 6:00 PM	22	23	24  	25 7:30 PM Shabbat Service	26
27 9:00 AM Religious School	28	29 7:00 PM Book Club 	30			

Next Month:

Hanukkah 2016 - December 24th through January 1st, 2017.

MONTHLY YAHRZEITS *Honoring the Memory of Loved Ones*

NAME	REMEMBERED BY	DATE
<u>At Temple On November 4, 2016</u>		
Lenora Carpe	Maurine Gold	11/01
William Feinsilber	Joyce Feinsilber	11/01
Jewelle Bowen	Barbara Klivens	11/01
Sarah Schiffman	Ilysha Buss	11/02
Penny Buss	Neal Friedman	11/04
Fanny Schuster	Sylvia Schuster	11/05

<u>At Temple On November 11, 2016</u>		
Helen Margolin	Neil Margolin	11/06
Rhoda Bibicoff	Bruce Bibicoff	11/07
Luis Guzman	Lila Tepper	11/07
Mary Cohen	Charley Cohen	11/07
Norman Goodman	The Congregation	11/07
Bernard Cohen	Robert Cohen	11/08
Hannah Davis	Marcia Jackman	11/08
Edward Bernstein	Fran Bernstein	11/08
Lillian Swedlove	Herbert Murez	11/09
Sam Miller	Marlene Dreyfuss	11/09
Helen Meyerfeld	The Congregation	11/09
Moussa Hakakha	Rabbi Mark and Mina Sobel	11/09
Leroy Stacel	Maretta Swartz	11/10
Victor Spirov	Vicki & Neil Margolin	11/10
George Gross	Sylvia Gross Sutton	11/10
Saul Schohan	Sue Schohan	11/11
Leah Factor	The Congregation	11/11

<u>At Temple On November 18, 2016</u>		
Bess Jacob	Phyllis Shear	11/13
Anton Fulop	Joyce Feinsilber	11/13
Gloria Glatzer	Flo Mazzei	11/14
Lester Vourn	Barbara Bolter	11/16
Ruth Fishman	Scott Fishman	11/16
Marta Berger	Jan Burns	11/17
Alison Glass	Anthony Glass	11/18
Cele Rothman	Linda Faden	11/19
David Nudell	Mayer Nudell	11/19

NAME	REMEMBERED BY	DATE
<u>At Temple On November 25, 2016</u>		
Albert Jones Hanlin	Neil Margolin	11/21
Frances Rose	Eileen Martin	11/21
Frances Rose	Marlene Dreyfuss	11/21
Joan Feinsilber	Joyce Feinsilber	11/22
Elizabeth Glass	Laura Soroka	11/24
Abraham Bibicoff	Martin Bibicoff	11/25
Louis Bigley	Bruce and Pat Bigley	11/26
Louis Bigley	Robert Bigley	11/26
David Antelman	Judith Antelman	11/26
<u>At Temple on December 2, 2016</u>		
Dr. Edwin Butler	M/M Neil Margolin	11/27
Robert Margolin	Neil Margolin	11/27
Noemi Garcia	David Krol & Hilde Garcia	11/28
Harry Avarbuch	Mitzi Rattner	11/28
Anita Crane	Rhonda Smith	11/28
Janita Haver	Steve Shanker	11/29
Grace Fulop	Joyce Feinsilber	11/29
Elizabeth Sopasnik	Marlene Flowers	11/29
Elizabeth Sopasnik	Judith Antelman	11/29
Shirley Trott	Dianne Bender	11/29
Lewis Pappert	Marilyn Pappert	11/29
Mildred Marcus	Ellie Somerfield	11/30
Harry Robins	Judy Robins	11/30
Rabbi Sheryl Lewart	Neil and Vicki Margolin	11/30
Rabbi Sheryl Lewart	David Krol and Hilde Garcia	11/30

Yahrzeit Donations

Peter Golper in loving memory of Miriam
Pasternack

Andrew Merrill in loving memory of Stephen
Merrill

Cheryl Mundon in loving memory of Lester Klein

Herbert Murez in loving memory of Joe Murez

Phyllis Shear in loving memory of Alan Shear



Mon.-Fri.
9-6



Saturday
9-5

Miriam Pasternack Peter Golper 9/25
Stan Feit Dr. Eric Feit 9/27
Donald Ham Henry Orlmann 9/28
Zina Lubow Certified Photographic Consultant Congregation 9/28

519 N. Glenoaks Blvd.
Burbank, CA 91502

Phone: (818) 841-5011
Fax: (818) 845-3331

Chai Times Ad Rates

Ad Size	Monthly	Annually
1/8 page	\$7.50	\$ 70
1/4 page	\$15	\$180
1/2 page	\$25	\$300
3/4 page	\$30	\$360
Full page	\$50	\$600

Please contact the TBE Office to place your ad!
You'll be glad you did.

The Chai Times is posted on the Web and reaches hundreds of TBE members in the San Fernando Valley area and surrounding areas (even as far as Alaska!).

IRA L. GOLDSTEIN

Attorney at Law

3500 West Olive Avenue, Suite 300
Burbank, California 91505
(818) 845-1421

Estate Planning—Probate—Family Law
Civil and Business Matters

Super-Transportable SuperLight ELECTRIC SCOOTER

- 100 lb Weight
- 24 lb Heaviest Part
- 250 lb Capacity
- 12 Mile Range
- 1 Minute Assembly
- Air Travel Friendly
- Fits in Car Trunk
- Indoor/Outdoor
- Medicare Approved
- No Tools Required



AAAMobility

www.aaamobility.com

Toll Free: 1-800-968-7464

PLAN AHEAD. IT'S A GIFT OF LOVE.

Rebecca O'Brien,

Advanced Planning Representative

800-600-0076 ext 337

robrien@mountsinaiparks.org

Memorial Parks and Mortuaries

Hollywood Hills FD1010

5950 Forest Lawn Drive

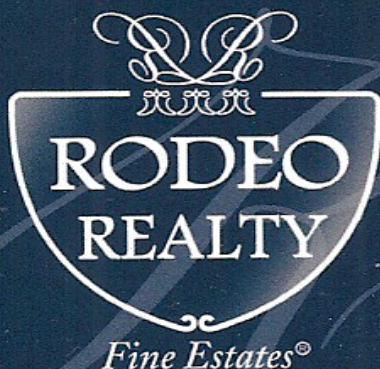
Los Angeles

Simi Valley FD1745

6150 Mount Sinai Drive

Simi Valley

Dedicated to the entire Jewish community
as a service of Sinai Temple of Los Angeles.



Franklyn Burns

State of California Lic. RE Broker
Realtor® Consultant
DRE License #00424940

15300 Ventura Blvd. #101
Sherman Oaks, CA 91403

Business: 818.986.7300 x101

Cell: 800.897.0006

Fax: 818.986.1066

FRANKBUSINLA@VERIZON.NET
WWW.FRANKBURNS4RE.COM

NoHo Mailboxes

5062 Lankershim
Blvd.

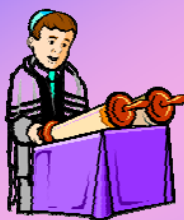
N. Hollywood, CA
91601

818-506-7744
Scott & Ezra Bergstein

20% off FedEx
and DHL Express
Shipping for
Temple Members.

**FedEx, UPS, DHL,
USPS
Private Mailboxes
Packing, Shipping
& Office Supplies**

BROWSE OUR TEMPLE BETH EMET GIFT SHOP



**TOP QUALITY TALLITS FOR MEN,
WOMEN, BAR & BAT MITZVAH**
All with matching bag and kippot.
All at reasonable prices.

LET'S TURN OUR POCKET CHANGE INTO REAL CHANGE!

Who is Just5Club? J5 is a nonprofit organization helping those who are silently struggling financially. In November of 2013, six young professionals came up with a simple idea; a concept that beautifully ties the act of giving with uniting individuals from all corners of the world. At J5, we believe in the power of unity, where each individual has the power to make a difference. When people are united with one common goal in mind, even the smallest amount can make a significant impact in the world we live in today.

Here's how it works, it's easy!

1. Log on to www.j5club.org
2. Sign up to become a Just5 member with your credit card
3. Each month, your credit card is charged JUST \$5.
4. At the end of every month, all the money is gathered and donated to a family or individual in need of financial assistance. Whether it's an emergency of being evicted from one's home or payment for medical bills, such as cancer treatment, J5 is there to help!

*100% of our members' donations go to the recipients; all other fees are sponsored from either the board or other donors!
*Each month, we send out a J5 Newsletter, letting our members and other subscribers know exactly whom they have helped.
Contact us: hello@j5club.org

