

April 2017



Chai Times

Temple Beth Emet of Burbank

"The Temple With A Heart"

"A freedom without commitment to others, a freedom without love or charity or duty or patriotism is unworthy of our founding ideals and those who died in their defense." Pres. Barak Obama



At the Passover Seder, there are several groups of four, the four cups of wine, the four questions and the four sons.

Each has a special place in the Seder. The four cups of wine in the Seder remind us of how G-d rescued us, redeemed us and brought us to freedom. The four questions tell us how we are making our festival of Freedom special through the foods we eat. The four sons remind us of how different people celebrate Passover and of our responsibility to teach them ALL.

This year we need to look at the Passover experience both as Jews and as Americans. In 1941, Norman Rockwell, in the midst of World War II, drew pictures that reflected what he felt were the Four Freedoms that all Americans strive for, taken from a speech by President Roosevelt. They are: Freedom of Speech and Expression, Freedom of Worship, Freedom from Want and Freedom from Fear.

Our country is today undergoing several wars, some external and some internal. The casualties of all these wars are Freedoms. Whether or not it is Isis in Syria or the Militia in Montana, freedom of Religion is at stake. By celebrating our Community Seder here at Temple Beth Emet we are doing our

(Continued on Page 4)



Pizza Night is on the first Friday of each month at **6:00 PM**, followed by the Family Shabbat Service at 7:00 PM. This month Pizza Night and Family Service is on **April 7th**. (See our notice on Page 14.)



Temple Beth Emet Preschool is going strong!! Enrollment is still open! (See photos from our **Preschool Director, Elaine Rosenfield** on pages 6 & 7.)



Temple Emanu El is hosting a Bakery and Passover Party on **Sunday, April 2nd at 2:30 PM - 4:30 PM**. It promises to be fun and exciting! (See the flyer on Page 10.)

Temple Beth Emet Community Seder is on **Saturday, April 15th at 6:30 PM**. Please come join us and bring your family and friends! (See our flyer on Page 9 of this issue.)



Temple Beth Emet Preschool presents its very first **Summer Camp Session!!** Open to preschoolers ages 2 - 4! Bring your little ones for a season of fun and creative expression in a nurturing, happy environment! (See flyer on Page 8 for details.)



Temple Beth Emet (House Of Truth) ORGANIZATION

Religious Leadership

Rabbi Mark H. Sobel
Lay Cantor, Kyle Orlemann
Music and Choir Director,
Robyn Kreisberg

Rabbi Emeritus William M. Kramer Z"L*
*His memory will always be a blessing to us.

2016-2017 Officers and Directors

Officers

Ira L. Goldstein, *President*
David Goldstein, *Vice President*
Cathy Zitnick, *Treasurer*
Shirley Abramson, *Secretary*

Directors

Barbara Bolter
Dan Gura
Eileen Martin
Herbert Murez
Martin Sultan
Ken Watnick

Men's Club President

Ron Kurtz

Sisterhood President

Cathy Zitnick

Morris Gold Religious School Faculty

Rabbi Mark Sobel, Education Director
Shirley Kirschenbaum, Grades K-1
Tanya Termechi & Barbara Lux, Grades
2-3
Tanya Termechi & Barbara Lux, Grades
4-5
Staff - Rabbi Mark Sobel, Grades 6-7
Mahnaz Termechi, Bar/Bat Mitzvah
Preparation
TBD, Confirmation (Grades 8-10)
Robyn Kreisberg, Music
Miranda Goldstein, Teaching Asst.

Religious School Parents Association

David Goldstein, President

Preschool

Elaine Rosenfield, Director

Office Staff

Office Manager/Secretary,
Victoria Gaffney
Religious School Office Assistant,
Edith Dague

Committee Chairs

Calendar and Usage
Victoria Gaffney

Communications

Barbara Lux

Education

David Goldstein

Membership

Barbara Bolter

Ritual

Ira L. Goldstein

Social Action

TBD

Ways and Means

TBD

Building and Maintenance

TBD

Coordinators and Volunteers

Adult Education

David Goldstein

Chai Times Editor

Barbara Lux

Children's Hospital LA Toys

Shirley Abramson

College Outreach

Cathy Zitnick, Chairman

Hannah Cline

Shirley Abramson

Food Drives

TBD

Havurahs

Ruth Glick, (818) 780-9134

Library

Barbara Lux/Logan Smith

Marquee

Craig Weisman/Rabbi Mark Sobel

Mitzvot

TBD

One Call

Victoria Gaffney

Oneg Coordination

TBD

Reach Out

Craig Weisman/Rabbi Mark Sobel

Technology

TBD

Historian

TBD/Rabbi Mark Sobel

Youth Group Coordinator (BBYO: AZA &
BBG)

TBD

Webmaster

TBD

Temple Beth Emet Office Hours

Monday-Thursday—9:00 AM-noon

Friday & Sunday—9:00 AM-1 PM

Saturday closed

The office is closed in observance of the following holidays:

*New Year's Day, President's Day,
First day of Pesach, Memorial Day,
Independence Day, Rosh Hashanah,
Yom Kippur, Thanksgiving*

Call the Temple office at (818) 843-4787 to
contact Temple Staff/volunteers.

Your message will be forwarded to the
appropriate person.

CHAI TIMES

Chai Times is the free, monthly
newsletter of Temple Beth Emet of
Burbank, delivered by email to
members and available at
www.TempleBethEmet.com.

Mailed hardcopies are available
for an annual TBE donation
payable through the Office.

**Editable article submissions,
photos and feedback are
encouraged and due by the 15th of
the month and may be emailed to:**

**chaitimes@TempleBethEmet.com
or delivered to the Temple office.
Submissions will be published
based on space available, relevant
content, and at the discretion of
Editor Barbara Lux, Temple
Officers and Directors.**

Follow Temple Beth Emet of Burbank

View webcasts at

[http://www.ustream.tv/discovery/live/all?
q=bethemetofburbank](http://www.ustream.tv/discovery/live/all?q=bethemetofburbank)

"Like" our Facebook Page at

[https://www.facebook.com/
TempleBethEmet?fref=ts](https://www.facebook.com/TempleBethEmet?fref=ts)

Rabbi Mark is a regular contributor
to the

In Theory column, which
appears in the Burbank Leader in
print and online at:

[http://www.burbankleader.com/
opinion/religion](http://www.burbankleader.com/opinion/religion)

If you have any suggestions or ideas
on how we can better serve our
members, please call the office or
email us at:

office@Templebethemet.com

PRESIDENT'S MESSAGE - April 2017



In my column last month, I invited the Temple community to a Town Hall Meeting to discuss how we can improve and grow our Temple. Thank you to everyone who participated. At the meeting on March 19th, there were people who have been members of our Temple family for over 20 years and some for less than 2. We had a good discussion. We talked about ways to increase activity and involvement in the Temple community. We talked about offering art, cooking, and genealogy classes led by members. We talked about offering a Saturday morning Shabbat service to address the needs of those who either do not drive at night or just cannot get to services after work on Friday nights. We talked about a singles/young couple service to be held off campus. We talked about a pre-teen youth group.

We also discussed the need for more creative fundraising, including activities that involve those outside of our immediate family. We talked about the need to spread the word about our inclusive congregation to those in interfaith relationships and those who are distant from their Jewish heritage. More than one of the attendees mentioned the value of this inclusiveness in their commitment to Temple Beth Emet.

We discussed how we can expand our visibility on social media and elsewhere on the internet, including the growing presence of local community-focused groups such as Nextdoor. One couple volunteered to help administer the [Temple Facebook](#) page.

Part of our discussion was about the crucial need for each of us to invite people to explore our diverse Temple community. That means learning to keep our eyes and ears open to opportunities to extend an invitation or offer a ride to someone who could find a home at Temple Beth Emet. Each of us must remember to make a special effort to welcome visitors and newcomers to our Temple. It is easy and natural to become involved in conversations with those we know at Temple events, and often many of us are so busy conducting the event we are not able to properly welcome new faces. This means that each of us have to remember that we are members of the "welcoming committee!"

April is a great month to involve friends and family, as well as ourselves, in Temple activities. On **April 2nd, from 2:30 to 4:30 PM** (after our Big Ask telephone fundraiser,) there will be a Matzoh Bakery & Passover Party presented by the [Burbank Jewish Experience](#), a consortium of the local congregations under a grant by the Jewish Federation. This year, the event will be hosted by our friends at Burbank Temple Emanu El.

On **April 15th beginning at 6:30 PM**, we will be holding our **Community Seder** here at Temple Beth Emet. I hope as many of you as possible will attend and bring friends and family. We also always need volunteers to help shop, prepare, serve, and clean up. If you are able to help, please contact the office by phone or email as soon as possible. This is always a popular event, and is perfect for those who want to see what our community is about.

Spring is a time of reawakening and new growth. Let us all commit to tend the beautiful garden that is the Temple Beth Emet community and help it bloom!

I wish you all a *chag Pesach sameach*, a very Happy Passover!

-- Ira L. Goldstein, President





(Continued from page 1)

best to rescue people from those elements that would take away their heritage. But that is once a year and not enough to save them. We must do more.

Death and injuries do not only come from bombs and bullets. They come from words and double talk and censorship and twitter feeds calling the press false news sources. Believe me, I do not like publications from either the far right or the far left, BUT, I remember daily, the words of Hillel, "That which is hateful to you, do not do to your neighbor." If I appreciate the freedom to write this column and other columns I have written, how can I, in good conscience, tell someone else not to speak their mind. The best I can do is offer to debate them in an open forum and, as the cliché says, "let the crumbs (or crummy ones) fall where they may."

Speaking of those, who, in order to fight America's wars, seek to remove healthcare from those who need it, I say, as a fourth-generation American Jew, you offend me and Franklin Delano Roosevelt, too. These four freedoms are why we were fighting in World War Two. Freedom from want was as important as the others. No one in America should find their Health Care wanting or, G-D forbid, non-existent. We are being asked to choose between saving money or saving lives. This is not the Jewish or the American way. Supporting those in need is an act of Tzedakah, righteousness, not an act of choice as is charity. We have no choice just as G-d had no choice in the desert as He/She supplied us with Manna (it means portion of food, by the way). Everyone deserves a portion of the healthcare pie.

The fourth of FDR's freedoms was Freedom from Fear. No one deserves to be afraid and no one will be so, if we bond together to fight for our freedoms. Just like the Children of Israel were afraid at the Reed Sea until Nachshon jumped into the sea. Each of us must swallow our fears and jump into the water to show others the way to freedom.

We will and must immerse ourselves in the struggle for freedoms. Do it, not only for those not wise enough to see the details in the loss of freedoms, or those who argue for and against "your freedoms," but for those who don't understand what loss of freedom means to all of us and, ESPECIALLY, for those who are **unable** to ask for freedom for themselves.

"Freedom is not free" is the slogan of 9/11. **It is still not free.** Furthermore, the cost of denying others their freedoms is costly not only to our pocketbooks but to our souls as Jews, and to the Soul of America!

B'ahava and Hag Sameah,

Rabbi Mark



Many thanks to everyone who attended this year's Religious School Purim Celebration on March 12. The day began with a megillah reading and costume parade and was followed by our annual Carnival which included, games, prizes, a moon bounce, and plenty of hamantaschen, pizza, and cotton candy for all. Special thanks go out to Rabbi Mark, to the boys of Kneset, the members of our Parents Association, and our 6/7 Bar/Bat Mitzvah students for organizing the event and making things run smoothly.



Our 2016/17 Adult Education series "What Does Judaism Say About. . . concluded on March 21st. Our final class featured an interesting lecture and discussion the subject of which was "Are We Meant To Be Perfect" Thanks to the Rabbi and to all those who attended this year's series, we are already considering topics for next year. The topics for our Adult Education series have traditionally been suggested by members of the congregation so If you have any suggestions for our next series please forward them to me or to the Rabbi and he will be glad to consider them.

Please mark your calendars for the morning of **Sunday, April 2nd from 9:30 AM to 12:00 PM** when we will be holding our first annual "**Big Ask.**" This much needed fundraiser is being organized by our Parents Association and on that morning you will be receiving a call from either a Temple officer or member of the Parents Association and asked to donate to Temple Beth Emet. Please see the flyer in this issue of the Chai Times, on Page 11, for more information.

A Place for Learning

We are contemplating offering an Adult Education class in the daytime, taught by Rabbi Mark Sobel! If this is something that might interest you, please let us know if you are interested in attending a daytime class at Temple by contacting the Temple Office.

We are contemplating offering an Art Class taught by Morris Bolter. It would be offered in the evening, donations would be appreciated, and all ages are welcome.

Please call the Office of the Temple at (818) 843-4787 or Barbara Bolter at (818) 761-3116 for questions or to indicate your interest in the class. If enough people are interested in this class, we will set a date and time for it in the May Issue of the Chai Times and also on The One Call.



What are our days like at TBE Preschool?
We connect with friends...



After celebrating the VERY important Birthday of Dr. Seuss, including a special lunch of "**Green Eggs and Jam**," we switched gears and moved on to the Holiday of Purim. The children listened carefully to the preschool version of the story about a King, the VERY beautiful, smart and brave woman who became his Queen, her uncle and a VERY bad man, who's name we do not want to hear! By the end of the week, the children not only knew the story BUT they were also acting it out. In addition to the special lunch, the celebration of Dr. Seuss' Birthday included **Pajama Day**, **Crazy Hair Day**, and **Wacky Wednesday** -a day for mismatched shoes and socks...everyone got into the act!



Delicious Cat In The Hat Kabobs!
Yum!



This "Cat In The Hat" looked a lot like one of our visiting moms! Hmmm!



One of our preschooler's mom had the Purim spirit as she joined in wearing a Batgirl costume!

...even the parents!!!!

Getting ready for Purim was also lots of fun...there were masks and groggers to make, a story to listen to and songs to sing, a parade with Rabbi Mark. Oh, and a carnival too!!!



We decorated face masks with jewels and stars! We think each one is a masterpiece!



One of our "elephants" is loose! And it took a ride on the giant slide!

A PICTORIAL VIEW OF OUR PRESCHOOL



Wacky Wednesday brought out the creative side of our students' stocking feet!



Rabbi Mark Sobel led the Preschool in a wonderfully fun Purim Service! Everyone had a noisemaker and was ready to use it when "H-man" was mentioned!



We used colorful Purim cards to tell the Purim story!



Our parade through the Sanctuary was fun and delighted our little ones for this festive holiday!

Now that our current families have turned in re-enrollment forms for next year, we are now ready to open enrollment to the wider community. If you or someone you know is looking for a nurturing, hands-on, play-based preschool/prekindergarten program, we are proud to say, "TBE Preschool is it!" Please feel free to contact me at either (818) 861-7660 or preschool@templebethemet.com. I would be happy to show you your temple preschool and talk about a program of which I am so proud to be a part.

Temple Beth Emet Preschool ** (818) 861-7660 ** preschool@templebethemet.com **

SUMMER CAMP AT TBE PRESCHOOL

We are excited to offer a five-week summer session!
Join us for one, two, three, four or five weeks...
it will be FUN!!!
(Weekly themes to be announced at a later date)



June 19 - July 21

Camp Hours: 9:00am-2:00pm

Please choose 3 days/week or 5 days/week.

June 19 - 23	3 days _____	5 days _____
June 26 - 30	3 days _____	5 days _____
July 3 - 7	3 days _____	5 days _____
July 10 - 14	3 days _____	5 days _____
July 17 - 21	3 days _____	5 days _____
Any One week	(3 days) \$195;	(5 days) \$300
Two weeks	(3 days) \$390;	(5 days) \$600
Three weeks	(3 days) \$585;	(5 days) \$900
Four weeks	(3 days) \$780;	(5 days) \$1200
Five weeks	(3 days) \$950;	(5 days) \$1475



\$60 will be deducted if your child is here the week of July 4th,
and is enrolled 5 days per week.

Registration form and payment of 50% is
due May 15 with full payment due by June 1,
in order to have proper coverage.





MATZOH

BAKERY & PASSOVER

PARTY!



Enjoy an interactive retelling of the Passover story, then bake your VERY own matzoh!



(As always, BJX events are completely free!)

APRIL 2, 2017 2:30-4:30PM
TEMPLE EMANU EL



1302 N. GLENDALE BLVD, BURBANK

RSVP FREE @

<http://bit.ly/bjxpassover>

Why is this COMMUNITY SEDER different from all other seders?*

*Join us and find out!

SEDER TIME



**Celebrate Passover with
Temple Beth Emet!**

**Saturday, April 15, 2017
at 6:30 PM**

**Suggested donation is \$18 or more for
adults. Please support this activity with
whatever contribution you can make.**

Everyone is welcome!

**Reservations are required so that we may
accommodate everyone. Please call Temple
office at (818) 843-4787 or email
office@templebethemet.com
(please include the number in your party.)**



TEMPLE BETH EMET OF BURBANK

"The Temple With a Heart"

Mark H. Sobel, Rabbi

**600 North Buena Vista Street, Burbank, California 91505
(818) 843-4787**

www.templebethemet.com



Temple Beth Emet of Burbank

"The Temple With A Heart"

It's time for Our 1st Annual



Big Ask!



On Sunday, April 2nd, 2017

What is it?

A much-needed fundraiser to help our Temple!

A Temple Officer or Member of the RSPA (Religious School Parents Association) will call and ask you to donate to
Temple Beth Emet.

What do I need to do?

Wait for our call on the morning of April 2nd between 9:30 AM and 12:00 PM to pledge your support and give as much as you can.

OR

If you don't want us to call you on April 2nd, just please send in your pledge by check (payable to Temple Beth Emet, write "Big Ask" on the memo line) or go to templebethemet.com and click on the tzedakah box on the right of the screen before April 2nd.

Thank you for supporting Temple Beth Emet!!

Temple Beth Emet is located: 600 N. Buena Vista St., Burbank CA 91505

www.templebethemet.com

Dear Members:

Our next **Sisterhood Meeting** will be on **Sunday, April 2nd at 10:00 AM** in Blum Hall. I would like all of you to attend our next meeting. I am sure that there are many of you out there that I haven't met. I look forward to making your acquaintance.



Saturday, March 11th, was our annual Purim Potluck Dinner with the costume contest that followed. The Sisterhood did quite well, as we got quite a few people to attend. We had some adorable costumes, and this time, we had some children who were dressed up. Everyone in costume got a prize this year. The Megillah reading was lots of fun as always, with all the noise makers and groggers whizzing about. Afterwards we all had pastries with coffee as we chatted.

Our **Community Passover Seder is on Saturday, April 15th at the Temple at 6:30 PM**. The Sisterhood will be helping out the Temple this year with this annual event. The food is always delicious and we all have such a wonderful time. The Temple is usually packed to capacity, which makes it the perfect time to catch up with friends and family. The Temple and the Sisterhood look forward to seeing you all there.

The Community Seder would be the perfect opportunity to invite a friend you know would like to be able to pray in our house of worship, without having to think of walking in alone. People inherently want to become a part of a community, and usually new people are very enthusiastic about improving their new place and making a good impression. Also, Temple Beth Emet is exceedingly affordable for the average working person. Our Temple allows you the ability to access information, services and groups you might not otherwise accessed, even with the internet. It is also the perfect place to do your charity work. I myself have felt so incredibly blessed to be able to hear and say the prayers at Friday Shabbat Services. Prayers that I hadn't heard or said for years. Three years ago, I was someone's guest, and have been with the Temple ever since. I cannot begin to tell you the wealth of spirit you will give to someone when they choose to become a part of a community. Reach out to a friend and bring them to our community. They will definitely be welcome.

The Sisterhood and I wish everyone a joyous and bountiful Passover.

Yours in the Sisterhood,

Cathy Zitnick



The Women's Seder



Do You Have a Son and/or Daughter In College?



Temple Beth Emet has started a program to connect with our students attending a College. We would like to help them to continue their Jewish way of life and offer them additional support. This way, they will always have an open line of communication with our Rabbi, should they have questions or need direction; and we will remind them of their link to Israel and to keep connected to the Jewish Community. After college, we hope to have them join our Temple, as an adult.

Please send an e-mail and give me the following information:

The name of the Student;

Class Level;

Address;

Name of the University, and;

If the Student is a member of any organization or club on campus.

The Temple will send a care-package for each holiday, as a gift to the Student with a calendar of events at the Temple for each month. The Student will be invited to all events sponsored by the Temple. We would like to encourage the Student to return to the Temple as often as they wish; as the Temple would like to offer itself as a second home and place of Jewish learning. I look forward hearing from you!

Cathy Zitnick, Sisterhood President
TBE College Outreach
CMARRIOTT01@msn.com

Join the Sisterhood!

This Is Your Personal Invitation to Join Temple Beth Emet's Sisterhood

Sisterhood is a group of friends who work together for our Temple, our children, and our community, in a very tangible way. Our President, **Cathy Zitnick**, will be happy to hear from you. Call her at **(818) 292-7180** or e-mail: cmariott01@msn.com. She will be happy to acquaint you with what we do and find out what your interests are. We are sure you will fit in and we will be happy to welcome you!

We meet the first Sunday of every month at 10:00 AM in Blum Hall. Please join us. Dues are only \$15 per year (commencing September of every year). Please fill out this form, cut it out and send it with your payment to: TBE Sisterhood, c/o TEMPLE BETH EMET, 600 N. Buena Vista Blvd., Burbank, CA 91505; or just leave it with the Temple Office.

NAME _____ ADDRESS _____
CELL PHONE _____

E-MAIL _____

Tribute Cards

Tribute cards are always in order for happy or sad occasions. These cards are a wonderful way to remember or honor someone.

Did you know that you can get on an automatic mailing to those in need of well wishes by contacting the office?

A card will automatically be sent from you in your name to those in need of healing and an amount of \$10 will be added to your bill each time a card is sent in your name.

**Contact the Temple Office at:
818 843-4787**



Shop at Ralphs? Register your reward card at ralphs.com and add TBE as your organization! Or register with eScrip.com and support TBE when you shop! On or after September 1st, your reward card designation should be renewed. You can renew online. Thanks and happy shopping!

“LIKE” US ON FACEBOOK!

Check out the Temple Beth Emet of Burbank Facebook page! Share relevant Jewish issues, timely messages, and pictures with your Temple Family and follow happenings at TBE, as well.



Visit the Helen Pappert Gift Shoppe

The Sisterhood Gift Shop is filled with products for all your Judaic needs. All items are reasonably priced and wonderfully thoughtful gifts for birthdays, bar and bat mitzvot, anniversaries, or just to say "I love you."



Remember the sick, recovering and bereaved with cards, calls, and visits.

**Please say prayers of
Refuah Sh'leimah for:**

Sylvia Sutton is always in our thoughts and prayers, we miss her very much.

**They help heal and comfort.
Please call the Temple Office
at (818) 843-4787 if a
Temple Member is sick, recovering or
hospitalized.**

Havurah Happenings

Havurah Simcha L'Chaim

Havurah Simcha L'Chaim members are mainly retired people. If you would like to join, please let me know. If you would like to be in a new Havurah, please let me know and we can try to get a new group started.

Please call me to discuss it.

Ruth Glick [818 780 9134](tel:8187809134)



**WE ARE PROUD TO BE OFFERING OUR
PIZZA NIGHT/FAMILY SHABBAT
SERVICE ON THE FIRST FRIDAY OF
THE MONTH. IT STARTS AT 6:00 PM.**

**CALL THE TEMPLE OFFICE OR
BARBARA BOLTER (818) 761-3116 OR
LAURA GOLDSTEIN (818) 843-5437.
TO RESERVE YOUR SPACE FOR PIZZA
NIGHT. WE HOPE TO SEE YOU THERE!**



April Anniversaries

**(There are no April Anniversaries
to announce.)**

April Birthdays

<i>Samantha Gura</i>	<i>April 6</i>
<i>David Zollman</i>	<i>April 7</i>
<i>Alex Gordon</i>	<i>April 8</i>
<i>Sophia Dorfman</i>	<i>April 24</i>
<i>Owen Gersh</i>	<i>April 25</i>
<i>Isaac Flores</i>	<i>April 27</i>



We have a wonderful Jewish Book Club at Temple!

Conducted by Fran Bourne-Johnson.

Where: Blum Hall at TBE

When: Tuesday, April 25, 2017 7:00PM to 8:30 PM

What is the book we will read and discuss: The Dovekeepers by Alice Hoffman

Synopsis: Nearly two thousand years ago, nine hundred Jews held out for months against armies of Romans on Masada, a mountain in the Judean desert. According to the ancient historian Josephus, two women and five children survived. Based on this tragic and iconic event, Hoffman's novel is a spellbinding tale of four extraordinarily bold, resourceful, and sensuous women, each of whom has come to Masada by a different path. Yael's mother died in childbirth, and her father, an expert assassin, never forgave her for that death. Revka, a village baker's wife, watched the murder of her daughter by Roman soldiers; she brings to Masada her young grandsons, rendered mute by what they have witnessed. Aziza is a warrior's daughter, raised as a boy, a fearless rider and expert marksman who finds passion with a fellow soldier. Shirah, born in Alexandria, is wise in the ways of ancient magic and medicine, a woman with uncanny insight and power.

The lives of these four complex and fiercely independent women intersect in the desperate days of the siege. All are dovekeepers, and all are also keeping secrets—about who they are, where they come from, who fathered them, and whom they love.

Where to get the book: The book is available on Kindle and Amazon.com, as well as local libraries.

Please read the book and be prepared to discuss it.

Cost of Participating: Free!

The Book Club will meet on the 4th Tuesday of every month. The group will discuss what the next book will be at the meeting, as well as the format of the discussion group.

You may contact Fran at franbourne@gmail.com or call her at (617) 306-3835.

Fran Bourne-Johnson is enthusiastically inviting you to attend. She will warmly welcome the readers and a lively discussion is expected. The book she is recommending is both exciting and interesting. What a great way to socialize AND improve your mind! Let's get together and share a great reading experience.

*Synopsis courtesy of Amazon.com/Books



April 2017

Nisan 5777



SUNDAY	MONDAY	TUESDAY	WEDNESDAY	THURSDAY	FRIDAY	SATURDAY
						1
						
2 9:00 AM Religious School 9:30 AM - 3:00 PM The BIG ASK! (See Page 11.) 2:30 - 4:30 PM BJX Matzo Factory/Passover Party (See Page 9.)	3	4 7:00 PM Temple Beth Emet Board Meeting 	5	6	7 6:00 PM Pizza Night  7:00 PM Family Service 	8
9 9:00 AM Religious School Religious School Passover Seder	10 Erev Passover	11	12	13	14 7:30 PM Shabbat Service 	15 6:30 PM Passover Community Seder at Temple
16 No Religious School 	17	18 Last Day of Passover 10:00 AM YIZKOR SERVICE	19	20	21 7:30 PM Shabbat Musical Service 	22
23 Holocaust Remembrance Day  9:00 AM Religious School Israel Memorial Day 	24 Yom HaShoah We will remember. 	25 7:00 PM Book Club Meeting (See Page 16.) 	26	27	28 7:30 PM Shabbat Service "Ask The Rabbi Service" 	29 Coming in May: May 2nd - Yom Ha- Atzmaut May 30th - Shavuot



NAME	REMEMBERED BY	DATE
<u>At Temple on March 31, 2017</u>		
Allan (Isaac) Rosenthal	Laura Soroka	4/1
Phyllis Mehlman	The Congregation	4/1
Phyllis Mehlman	Andrew Merrill	4/1
Margot Palmer	Marlene Dreyfuss	4/1
<u>At Temple on April 7, 2017</u>		
Charles Jones	Lois Jones	4/2
Matilda Bayer	Fred Bayer	4/2
Louis Rosenthal	Laura Soroka	4/3
Edith Lapidus	Barry Verdi	4/5
Fred Ditter	Jeff Oseas	4/5
Philips Levinson	The Congregation	4/6
Hanne Elaine Basskin	The Congregation	4/7
<u>At Temple on April 14, 2017</u>		
William Saunders	Jan Burns	4/09
Anne Goldstein	Ira Goldstein	4/10
David Levinson	The Congregation	4/10
Pauline Zober	Maurine Zober Gold	4/11
Roberto Rachilewski	Silvia Berger	4/11
Fannie Zimmer	The Congregation	4/12
Stanley Altman	Rabbi Mark/Minna Sobel	4/15
<u>At Temple on April 21, 2017</u>		
Sonja Murez	Herbert Murez	4/17
Paz Montalvo	Jodessa Bayer	4/17
Doris Linger	Diane Linger	4/19
Elisa Gallay	The Congregation	4/19
Joseph Friedman	The Congregation	4/20
Harry Stein	Ron Dacher	4/20
Anna Osbourn	Marjorie Jacobs	4/21
Anthony Mendez	Elizabeth Postal	4/21
Suzanne Galland	Pamela Franklin	4/21
John Manocchia	Mary Manocchia	4/22
<u>At Temple on April 28, 2017</u>		
Al Canter	Gail Arce	4/23
Ronnie Averbuch	Mitzi Rattner	4/23
Miriam Dubinsky	Bennett Kayser	4/23
Alvin Toffel	Dorothy Matzkin	4/24
Mario Guzman	Lila Tepper	4/25
Arthur Fields	Susan Fields	4/25
Miriam Grunner	Shirley Abramson	4/25
Aaron Soroka	Mark Soroka	4/26

NAME	REMEMBERED BY	DATE
<u>At Temple on April 28, Continued</u>		
Lucy Rafaelli	The Congregation	4/28
James Craig Sloves	Myra Sloves	4/28
<u>At Temple on May 5, 2017</u>		
Miriam Dacher	Ron & Merry Dacher	4/30

IN MEMORY OF OUR LOVED ONES

YAHREZEIT DONATIONS

Dennis Brown in loving memory of
Kasey Maxwell Brown

Joel & Harriet Feinstein in loving
memory of Maxwell Feinstein

Elaine Fishman in loving memory of
Samuel Greenberg

Beverly Genereux in loving memory of
her husband Frank Genereux

James Levin in loving memory of Ruth
Levin

Herbert Murez in loving memory of
Ida Kushner

Warren & Melissa Potter in loving
memory of Harold Potter

Phyllis Shear in loving memory of
Donald Jacob

Birdie Zitnick in loving memory of
Harriet Simpkins



Mon.-Fri.
9-6



Saturday
9-5

PHOTO • DIGITAL • VIDEO

Henry Gross
Certified Photographic Consultant

519 N. Glenoaks Blvd.
Burbank, CA 91502

Phone: (818) 841-5011
Fax: (818) 845-3331

IRA L. GOLDSTEIN

Attorney at Law

3500 West Olive Avenue, Suite 300
Burbank, California 91505
(818) 845-1421

Estate Planning—Probate—Family Law
Civil and Business Matters

Super-Transportable SuperLight ELECTRIC SCOOTER

- 100 lb Weight
- 24 lb Heaviest Part
- 250 lb Capacity
- 12 Mile Range
- 1 Minute Assembly
- Air Travel Friendly
- Fits in Car Trunk
- Indoor/Outdoor
- Medicare Approved
- No Tools Required



AA Mobility

www.aaamobility.com

Toll Free: 1-800-968-7464

Chai Times Ad Rates

Ad Size	Monthly	Annually
1/8 page	\$7.50	\$ 70
1/4 page	\$15	\$180
1/2 page	\$25	\$300
3/4 page	\$30	\$360
Full page	\$50	\$600

Please contact the TBE Office to place your ad! You'll be glad you did.

The Chai Times is posted on the Web and reaches hundreds of TBE members in the San Fernando Valley area and surrounding areas (even as far as Alaska!).

PLAN AHEAD. IT'S A GIFT OF LOVE.

Rebecca O'Brien,

Advanced Planning Representative

800-600-0076 ext 337

robrien@mountsinaiparks.org

Memorial Parks and Mortuaries

Hollywood Hills FD1010

Simi Valley FD1745

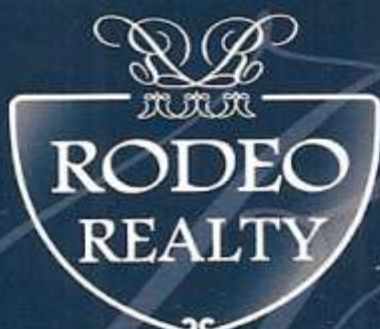
5950 Forest Lawn Drive

6150 Mount Sinai Drive

Los Angeles

Simi Valley

Dedicated to the entire Jewish community
as a service of Sinai Temple of Los Angeles.



Fine Estates®

Franklyn Burns

State of California Lic. RE Broker
Realtor® Consultant
DRE License #00424940

15300 Ventura Blvd. #101
Sherman Oaks, CA 91403

Business: 818.986.7300 x101

Cell: 800.897.0006

Fax: 818.986.1066

FRANKBUSINLA@VERIZON.NET
WWW.FRANKBURNS4RE.COM

NoHo Mailboxes

5062 Lankershim
Blvd.
N. Hollywood, CA
91601
818-506-7744
Scott & Ezra Bergstein

**FedEx, UPS, DHL,
USPS
Private Mailboxes
Packing, Shipping
& Office Supplies**

20% off FedEx
and DHL Express
Shipping for
Temple Members.

BROWSE OUR TEMPLE BETH EMET GIFT SHOP



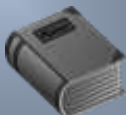
**TOP QUALITY TALLITS FOR MEN,
WOMEN, BAR & BAT MITZVAH**
All with matching bag and kippot.
All at reasonable prices.

The Temple Library has a beautiful set of Judaic Encyclopedias available. If you wish to consider having them for your home or a gift, please contact the Temple Librarian, Barbara Lux. There is no set price for the volumes, but a nice monetary donation to the Temple's General Fund would be lovingly appreciated.

You may leave a message for me at the Temple Office at 818 843-4787, and I will return your call, or send a message to my email address: Formerlygidget@gmail.com.

I will be happy to show them to you.

Barbara Lux
Editor, Chai Times &
Temple Librarian



IN MEMORIAM

We bid goodbye to two public persons who passed on to eternity in march 2017.

Musician, Composer

CHARLES EDWARD ANDERSON "CHUCK" BERRY

October 18, 1926 - March 18, 2017

And

Columnist and Author

JAMES EARLE "JIMMY" BRESLIN

October 17, 1930 - March 19, 2017

We will miss having you among us. G-d bless you.