

March 2020



Chai Times

Temple Beth Emet of Burbank

"The Temple With A Heart"

Mark H. Sobel, Rabbi Ira L. Goldstein, President
600 N. Buena Vista St. Burbank, CA 91505
(818) 843-4787 Fax (818) 557-7240
www.TempleBethEmet.com Office@TempleBethEmet.com

"And when Haman saw that Mordecai bowed not down, nor prostrated himself before him, then was Haman full of wrath." (Book of Esther 3:5)



In a few weeks we will celebrate Purim, the holiday that rejoices over our being saved from annihilation at the hands of Haman the Agagite. Most of us remember the Hamantachen, the masks, the carnival and the Megillah reading. But did anyone ever think of it as a holiday revolving around insecurity and courage. Sometimes, I think and ask questions around, "What if?"

First let us look at Haman's actions in the Megillah. Mordechai refused to bow down before Haman(3:5). Then Haman went before the King to condemn our people.

I find myself thinking when I read this," Why didn't Haman just walk over to Mordechai and ask, "Why didn't you bow before me? Everybody else did!" Mordechai, being the good, upstanding citizen he was would probably have said, "I am commanded by G-d, not to bow before any mortal, only the One God".

Perhaps, Haman would have still been angry but he could have responded, "In the future don't be

(Continued on page 3)



March 6 Tot Shabbat
Service 5:30 PM
Family Shabbat
Service 7:00 PM

ADULT EDUCATION CONTINUES! *Jews in America*

March 10 - 7:00 PM
Religiosity/ Where is G-d when we need Her?
See Page 10

PURIM CELEBRATIONS
Our multilingual Megillah Reading
Saturday, March 14 - 7:00 PM
Refreshments Follow
Religious School Purim Carnival
Sunday, March 15 - 11:00 AM - 1:00 PM
Carnival Flyer Page 6

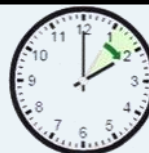
Thank you to everyone who attended our
MEET 'N GREET on February 15
It was a wonderful evening and a great success!

Our next "Thank a Member" Shabbat will be on **Friday, March 13** at 7:30 PM. Come join us in this heartfelt service & cheer on our fellow members!

READ ANY GOOD BOOKS LATELY?

Our Temple Book Club has!
Join us **March 25** at 7:00 PM
When we will discuss:
The Garden of the Finzi-Continis
by Giorgio Bassani

See Page 10



DAYLIGHT SAVING TIME BEGINS
Sunday, March 8
Remember to "spring forward"!



TEMPLE BETH EMET (HOUSE OF TRUTH) ORGANIZATION

Religious Leadership

Rabbi Mark H. Sobel
Music and Choir Director,
Robyn Kreisberg

Rabbi Emeritus William M. Kramer Z"L*
*His memory will always be a blessing to us.

2019/20 Officers and Directors

Officers

Ira L. Goldstein, *President*
Ken Watnick, *Vice President*
Eileen Martin, *Treasurer*
Marlene Dreyfuss, *Secretary*

Directors

Dan Gura
Mary Gura
Barbara Harmon
Fran Bourne Johnson
Herbert Murez
Theida Salazar

Sisterhood President

Marlene Dreyfuss

Morris Gold Religious School Faculty

Rabbi Mark Sobel, Education Director
Shirley Kirschenbaum K-1
Laura Goldstein- Hebrew 2-3,4-5
Hayley Wood Social Studies
2-3,4-5
Robyn Kreisberg Social Studies 6-7, Music
Joshua Sobel Confirmation 8-10,
Hebrew 6-7
Rabbi Mark Bar/Bat Mitzvah Class
Robyn Kreisberg, Music

Religious School Parents Association

Cherie Rye, President

Preschool & Pre-Kindergarten

Hayley Wood, Director

Office Staff

Office Manager/Secretary,
Victoria Gaffney

Committee Chairs

Calendar and Usage

Victoria Gaffney

Education

David Goldstein

Membership

Barbara Bolter

Ritual

Ira L. Goldstein

Building and Maintenance

Billy Berman

Coordinators and Volunteers

Adult Education

David Goldstein

Chai Times Editor

Ira L. Goldstein

Children's Hospital LA Toys

Shirley Abramson

Havurahs

Ruth Glick, (818) 780-9134

Library

Shirley Abramson

Marquee

Craig Weisman/Rabbi Mark Sobel

One Call

Victoria Gaffney

Reach Out

Craig Weisman/Rabbi Mark Sobel

Temple Beth Emet Office Hours

Monday-Friday 8:00 AM - 3:00 PM

Saturday & Sunday - closed

The office is closed in observance of the following holidays:

*New Year's Day, President's Day,
First day of Pesach, Memorial Day,
Independence Day, Rosh Hashanah,
Yom Kippur, Thanksgiving*

Call the Temple office at (818) 843-4787 to
contact Temple Staff/Volunteers.

Your message will be forwarded to the
appropriate person.

CHAI TIMES

Chai Times is the free, monthly
newsletter of Temple Beth Emet
of Burbank, delivered by email to
members and available at
www.TempleBethEmet.com.

Mailed hardcopies are available
for an annual TBE donation
payable through the Office.

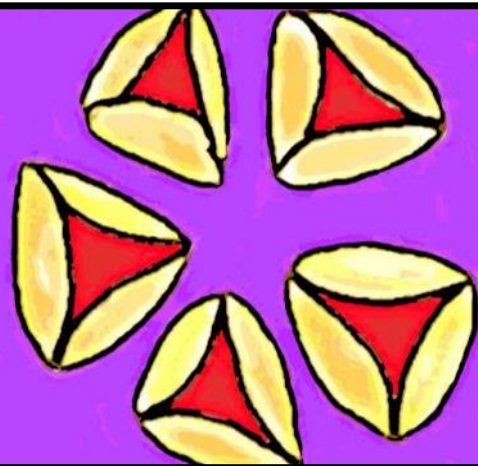
**Editable article submissions,
photos and feedback are
encouraged and due by the 15th
of the month and may be emailed
to:**

**chaitimes@TempleBethEmet.com
or delivered to the Temple office.
Submissions will be published
based on space available,
relevant content, and at the
discretion of the Editor, Temple
Officers and Directors.**

Follow Temple Beth Emet of Burbank

"Like" our Facebook Page at

[https://www.facebook.com/
TempleBethEmet?fref=ts](https://www.facebook.com/TempleBethEmet?fref=ts)



If you have any suggestions or ideas
on how we can better serve our
members, please call the office or
email us at:

office@Templebethemet.com



(Continued from page 1)

here at the start of day or the end when I come out, so I don't feel embarrassed!"

It seems to me annihilating a whole group of people over one man's perceived disrespect seems excessive. Haman is the personification of evil to our people. But, perhaps he was just an insecure public figure ? Anyone with the same amount of power as he had does not need 100% obedience, anywhere in the nineties would be certainly acceptable. But, I don't think we should pity Haman. His actual actions speak for themselves, but maybe we can use the Haman-Mordechai situation to teach us about ourselves and others. How many times have we had dealings with people who insult us or who become insulted by our actions? Mordechai was not bowing to Haman out of disrespect, but out of respect for God. Something definitely within his own right.

We need to ask ourselves, how many times have we over reacted to a perceived slight instead of questioning the 'offender' regarding the action? How many times has it ruined a potential success? True, it takes courage to walk over to someone who has 'hurt' you and ask for an explanation. Allowing yourself to be vulnerable always demands courage, but aren't we in charge of ourselves and therefore have personal power?. The tragedy is that people do not use their personal courage. The power to construct bridges of understanding is used, instead, to destroy any potential bondings.

Another example from the Purim story of power and courage comes from Esther and Ahasuerus. The law was clear, 'anyone going to the King's chambers unannounced would be killed.' Then how could Esther go, knowing she faced certain death? Esther went because she was secure in her position. She was never arrogant, a sign of insecurity, but truly known as the 'graceful one (Hadassah).

We know how the story ends, Esther pleads for our people, they are rescued and Haman is hanged.

But the deeper lesson is that even when we are insecure in our place or position, we must still ask, "What's did you mean by that?" or simply, "What's up with that?" "And then truly listen to the answer!

Understand that true courage in the face of potential disaster will be rewarded. It may not be half of the Kingdom of Shushan, but it will be the entire empire of Honesty and Respect.

B'ahava and Happy Purim,

Rabbi Mark



PRESIDENT'S MESSAGE - March 2020

I was at Target last Monday to buy a tube of toothpaste. Walking past the health and personal care aisles, I noticed a lot of empty spots on the shelves. Cold medicine and pain relievers were pretty well picked over. Then I noticed the toothpaste area was also low on stock. Walking around the store, I realized that the sparse stock was not the result of people stocking up in the face of the coronavirus spread, but it was just that the store had not been restocked after the weekend.



My next stop was Costco. Usually, it is a good time to go to Costco during the gap between the end of the dates of one “member savings” booklet and the beginning of the next. This time, the parking lot was almost as crowded as on a weekend (which I avoid if possible). Looking at what was in the carts in queue at the checkout area, I saw a lot of people buying water and toilet paper. This, I surmised, was in response to concerns over coronavirus.

I have to admit; we have a habit of picking up a package of toilet paper while shopping “just in case” we were running low at home. At one time I realized we had many, many packages stacked up in the garage. We were also amassing quite a stock of Oxy Clean from Costco as we picked one up whenever it was on “member savings.”

It is one thing to pick up an extra package of something “just in case” and another thing to stock up because of a panic. Panic builds on itself. A recent article in the *New York Post* quoted Justin Wolfers, a professor of public policy and economics at the University of Michigan.

Even if you're not freaked out about a pandemic, you worry that everyone else is & they'll stockpile ... & you don't want to be the left paperless.

Fear of a run on toilet paper — like a run on banks — is enough to create an actual run. And when the runs start we need help. (pun intended.)

Health experts are trying to reassure us that there is no need to panic, at least not yet. They have been offering practical advice — stay at home if you are sick, clean surfaces more often, avoid touching your face, cover your cough or sneeze with a tissue and then dispose of the tissue, and replace a handshake with a wave or verbal greeting. Most importantly, wash your hands frequently and correctly.

(Continued on page 5)



(Continued from page 4)

Washing your hands correctly involves soaping up and rubbing and scrubbing for twenty seconds, then rinsing with warm water. Twenty seconds is about the time it takes to sing Happy Birthday to You twice. But according to a post on lifehacker.com,

“Happy Birthday” is, however, a dumb song. It is hard to sing, and—unless it is your birthday—serves as a sad reminder that it is *not* your birthday, and you will not be getting any presents. Because it is a dumb song, you may find yourself rushing through it, negating the entire purpose of singing this hard-to-sing song.

The post suggests instead singing the Pizza Bagel Bites jingle. “This song is not only easier to sing than the Happy Birthday, but it reminds you to buy Pizza Bagels, which is good!” The post helpfully includes a video clip of the jingle from 1996. I do not have anything against Pizza Bagel Bites *per se*, but I do recognize that (1) they are an abomination of both pizza and bagels and (2) most varieties contain both meat and cheese, and as Temple President I cannot officially condone their purchase. I suggest sticking to Happy Birthday to You. Not only is it undoubtedly more well-known than the Bagel Bites jingle, it may remind you to buy cake, which is also good!

At Temple Beth Emet with will be monitoring official information and taking appropriate precautions with regard to our services and events, our preschool and our religious school. We hope you will do the same. It is not a time to panic, but please, remember to wash your hands, whatever you decide to sing.

-- IRA L. GOLDSTEIN, President





Our annual Purim Carnival will take place on March 15th. There will be games, costumes, music, hamantaschen and fun for the whole family! This is a Temple-wide event and we hope Temple members of all ages will come and join the fun! Children and adults are encouraged to come in costume. Our older Religious School children will run the games. We ask for a small donation at the door to cover expenses for the event and encourage everyone to purchase tickets for the games. Tickets are also given out in exchange for wearing costumes and bringing canned good donations. Excess proceeds support your Temple. Please support our Religious School children, join the fun and attend!



**Join us for the
Temple Beth Emet**

Purim Carnival!



- **Carnival Games**
- **Prizes**
- **Hamantaschen**

**Fun for the
whole family!**

Sunday March 15th





Last month our TBE "Voluntots" decorated cookies, made cards and put together some beautiful flower bouquets for the residents at Belmont Village Senior Living Center. After school we met at the Senior Center to pass out the goodies and had a lovely sing-a-long led by our very own children's music specialist Halina Janusz. It was such an amazing experience for everyone involved. It was so touching to see the smiles on all of the seniors as they sang, danced and just enjoyed the company of their new little friends from TBE Preschool! :)



We have a few spots left in the preschool for this year, so if you know anyone looking...send them our way! :)

~Hayley Wood
Preschool Director
Temple Beth Emet Preschool
www.templebethemetpreschool.com
(818) 861-7660





Temple Beth Emet of Burbank
sisterhood

The Temple Beth Emet Sisterhood focus on serving the Temple and the community. Membership in Sisterhood means making a commitment to living Jewish. By being a member, you become an active link in the history of our people. You serve as a role model for Jewish values. Each member blossoms in their own individual way as they experience the camaraderie of Sisterhood and share in service to the Jewish community.



This Is Your Personal Invitation to Join Temple Beth Emet's Sisterhood

Sisterhood is a group of friends who work together for our Temple, our children, and our community, in a very tangible way. Our President,

We meet the first Sunday of every month at 10:00 AM in Blum Hall. Please join us. Dues are only \$15 per year (commencing September of every year). Please fill out this form, cut it out and send it with your payment to: TBE Sisterhood, c/o TEMPLE BETH EMET, 600 N. Buena Vista Blvd., Burbank, CA 91505; or just leave it with the Temple Office.

NAME _____

ADDRESS _____

PREFERRED PHONE _____

E-MAIL _____



Temple Beth Emet Book Club

Conducted by Fran Bourne-Johnson



Where: Blum Hall at Temple Beth Emet of Burbank

When: March 24, 2020 — 7:00PM to 8:30 PM

What is the book we will read and discuss:

THE GARDEN OF THE FINZI-CONTINIS

By Giorgio Bassani



A richly evocative and nostalgic depiction of prewar Italy. The narrator, a young middle-class Jew in the Italian city of Ferrara, has long been fascinated from afar by the Finzi-Continis, a wealthy and aristocratic Jewish family, and especially by their daughter Micol. But it is not until 1938 that he is invited behind the walls of their lavish estate, as local Jews begin to gather there to avoid the racial laws of the Fascists, and the garden of the Finzi-Continis becomes an idyllic sanctuary in an increasingly brutal world. Years after the war, the narrator returns in memory to his doomed relationship with the lovely Micol, and to the predicament that faced all the Ferrarese Jews, in this unforgettably wrenching portrait of a community about to be destroyed by the world outside the garden walls.

Where to get the book: The book is available at Amazon.com and other retailers. Please read the book and be prepared to discuss it.

Cost of Participating: Free!

* Synopsis courtesy of penguinrandomhouse.com



ADULT EDUCATION SERIES - Presented by Rabbi Sobel

TEMPLE BETH EMET ADULT EDUCATION SERIES 2019-2020

Presented by **RABBI MARK H. SOBEL**

For the 75th Anniversary year of the end of World War II, we will be examining in depth five areas of concern for

JEWS IN AMERICA

Concluding Session:

March 10, 2020 - Religiosity/ Where is G-d when we need Her?

All sessions begin at 7:00 PM—Open to the public.
There is no charge for this series, donations accepted.



MARCH Yahrzeits

NAME	REMEMBERED BY:	DATE	NAME	REMEMBERED BY:	DATE
At Temple March 6, 2020			At Temple March 13, 2020 (Continued)		
Gene Adelstein	Ilysha Buss	March 1	Jim Moore	Gail Arce	March 14
Rabbi David Hoffman	Robyn Kreisberg	March 1	Jim Moore	Barbara Moore	March 14
Florence Frischman	William Frischman	March 2	Anna Klevinson	Congregation	March 14
Herman Everakes	Jerry Everakes	March 3	At Temple March 20, 2020		
Barney Kaufman	Barry Kaufman	March 3	Avrum Hirsh Hutter	Robyn Kreisberg	March 15
Sam Levin	Estelle Becker	March 4	Frank Genereux	Beverly Genereux	March 15
Ruth Levin	James Levin	March 5	Harold Potter	Warren Potter	March 17
Rose Barton	Jamie Barton	March 5	Samuel Greenberg	Elaine Fishman	March 17
Bertha S. Flamholtz	Barbara Snitzer	March 6	Jose Villareal	Vicenta Verdi	March 17
Frederick Molenky	Rabbi Mark Sobel	March 6	Howard Segal	Naomi Aronoff	March 18
At Temple March 13, 2020			Esther Block Epstein	Bruce Epstein	March 19
Alfred Friedman	Neal Friedman	March 8	Jay Berger	Dave Berger	March 20
Albert Aaron Anderle	Bonnie Bunyik	March 8	At Temple March 27, 2020		
Irving Schredder	Bonnie Friedman	March 8	Morris Swedlove	Herbert Murez	March 24
Sarah Featherman	Frances Bourne Johnson	March 9	Saul Kaufman	Barry Kaufman	March 25
Nancy Colton	M/M Bruce Colton	March 9	Ruth Bibicoff	Martin Bibicoff	March 25
Viola Krone	Gerald & Harriett Winnick	March 9	Ira Carpe	Congregation	March 26
Simie Kaufman	Frances Bourne Johnson	March 12	Louis Weicensang	Linda Mazur	March 28
Donald Jacob	Phyllis Shear	March 12	Harry B. Silberman	Congregation	March 28
Morris Gold	Congregation	March 12	At Temple April 3, 2020		
David Cohen	Deb Cohen	March 12	Roy Dietz	Terry Goldwater	March 29
Melvin Gordon	Stacy Rivera	March 13			

CREATE A LASTING LEGACY

Planned Giving is a wonderful and loving way to ensure the legacy of Temple Beth Emet of Burbank and future generations. Planned Giving can be as simple as a bequest or a more complex financial arrangement which can provide many options and possible tax deductions for the donor.

Speak with your legal and financial advisors as to the best way to structure your wills and estate planning to include the Temple in your current and future plans.

Information on Planned Giving can also be found on our website at:

<http://www.templebethemet.com/social-action/donations/>



By Herb Murez, Member of Temple Beth Emet Board of Directors

It was difficult to do this trip in the latter half of December 2019. I am retired and my time is flexible but my son, a banker, had very limited time; my daughter-in-law had gravely ill parents to look after; and my granddaughter, a Senior at Santa Clara University, had to fit it in between quarters. But we did it, and it was a great experience!

My advice to all future Israel travelers: Get a direct flight, it is worth the difference in cost. We had to change planes at Heathrow Airport in London. This airport is indescribably immense! Happily, there was no mix-up in the transfer of our baggage - a common experience as I heard.

We landed at Ben Gurion International Airport around 11:00 o'clock PM and had reservations to spend the rest of the night near the airport. What we got was not at all what had been described! A common experience, as I learned. Finding accommodations in Israel near the international airport in the middle of the night is difficult, so we made do with what we got.

On the next morning we drove to Jerusalem. What was open country a few years ago is now filled with large buildings that had huge English language signs on them, reminiscent of Silicon Valley. Microsoft, Google, etc., are all well represented. These tech giants all have branch locations there. There is a lot of high tech talent in Israel!


In Jerusalem we stayed at a hotel that was quite satisfactory. My granddaughter had stayed there on her Birthright trip. I have a quarrel with King David: He must have chosen the hilliest place in the whole land! It is hard to find any level land in Jerusalem. The city is ultra-orthodox. People wearing orthodox garb are seen everywhere.

We visited the old city, and took a tour to Masada. There is a special, reverential feeling to walk in the steps of the heroes who chose to die rather than become Roman slaves. Masada is not only a sightseeing experience; it is an emotional one.

We drove to Haifa. The Bahai garden is like no other I have ever seen. Our reservations were disappointing. They had been grossly misdescribed to us. We did not stay in Haifa but drove to Caesarea where we found a nice apartment in a new building. There is a lot of construction going on in Israel. Virtually in every suitable place construction cranes are visible. What we did not see are single family homes, except in a kibbutz we visited later, and they were old. Typically, new apartment buildings will be about ten or more stories high, with perhaps one to three apartments per floor, and some green space between buildings.

(Continued on page 15)

FEBRUARY 2020 SHIVAT/ADAR 5780

SUNDAY	MONDAY	TUESDAY	WEDNESDAY	THURSDAY	FRIDAY	SATURDAY
1 Religious School 9:00 AM - Noon	2	3	4	5	6 5:30 PM Tot Shabbat 7:00 PM Family Service	7
8 Religious School 9:00 AM - Noon 10:00 AM - Sisterhood Meeting Daylight Saving Time Starts	9	10 7:00 PM - Adult Education - Jews in America - Session 5	11	12	13 7:30 PM Shabbat Musical Service "Thank a Member" Shabbat 	14 7:00 PM - Purim - Megillah reading
15 Religious School 9:00 AM - Noon 11:00 AM - 1:00 PM Religious School Purim Carnival <div style="border: 2px solid orange; padding: 2px; display: inline-block;"> Chai Times Submissions Due </div>	16	17 7:00 PM Temple Board Meeting	18	19	20 7:30 PM	21
22 Religious School 9:00 AM - Noon	23	24 7:00 PM Book Club	25	26	27 7:30 PM Shabbat Service 	28
29 Religious School 9:00 AM - Noon	30	31			7:30 PM Shabbat Service	

Coming in April: Fri. April 3 - Tot Shabbat, 5:30 PM, Family Shabbat Service, 7:00 PM. Sun. April 5 - Sisterhood Meeting, 10:00AM. Tues. April 7 - Temple Board Meeting, 7:00 PM. Wed. April 8 - Passover Begins (Evening). Sat. April 11 - Temple Community Seder, 6:30PM. Tues. April 28 - Book Club.



March Birthdays

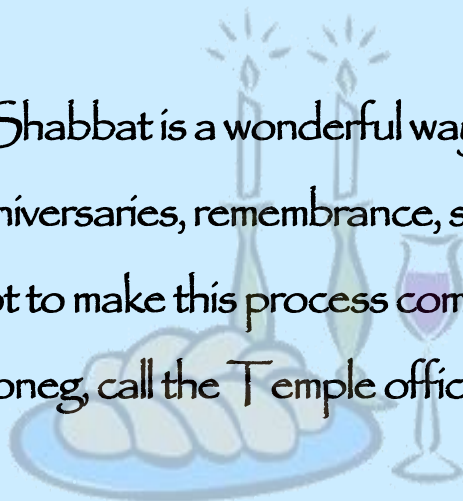
Jack McKinnon	March 6
Logan Bigley	March 7
Samantha Solomons	March 7
Nikole White	March 10
Jessica Berger	March 11
Jacob Sultan	March 14
Cheyenne Goldfarb	March 16
Eric Feit, M.D	March 26
Lucas Franklin	March 26
Charles Langer	March 28

A Special Tribute Donation Has Been Made to Honor

"My Sister, Marlene Dreyfuss" by Eileen Martin

Sponsoring an Oneg Shabbat is a wonderful way to honor or celebrate an event –

Bar Mitzvahs, anniversaries, remembrance, simcha, or simply because it's Shabbat! We try not to make this process complicated, so if you would like to sponsor an oneg, call the Temple office at (818) 843-4787!



Yahrzeit Donations

Anne Abramson remembered by Shirley Abramson

Louis Bigley & Ameila Kapson remembered by Bruce & Pat Bigley

- Nathan Rose. Father of Beverly Genereux remembered by Beverly Genereux

My Father, Alfred Jackman remembered by Bunni Jackman

Visit the Helen Pappert Gift Shoppe

The Sisterhood Gift Shop is filled with products for all your Judaic needs. All items are reasonably priced and wonderfully thoughtful gifts for birthdays, bar and bat mitzvot, anniversaries, or just to say, "I love you."

Remember the sick, recovering and bereaved with cards, calls and visits.

Please say prayers of *Refuah Sh'leimah* for:

Fran Bourne Johnson

Bailey Harrison

Craig Wiseman

Orven Schanzer has been ill for some time now, may G-d grant him comfort and complete recovery.

Stuart Friedman has been ill. Let's join together in prayer for his improved and continued good health.

We pray for Maya Lee & wish her good health

*Please call the Temple Office
at (818) 843-4787 if a
Temple Member is sick, recovering or
hospitalized.*



Havurah Happenings Havurah Simcha L'Chaim

Havurah Simcha L'Chaim members are mainly retired people. If you would like to join, please let me know. If you would like to be in a new Havurah, please let me know and we can try to get a new group started.

Please call me to discuss it.

Ruth Glick [818 780 9134](tel:8187809134)



(Continued from page 11)

Caesarea is an interesting place. There are a lot of Roman ruins. We were told it was the first artificial harbor built anywhere. From there we went to my cousin's house and for what was the high point of the trip: A family reunion, and the first night of Chanukkah! As the oldest family member still alive, I had to light the first candle, and I met several fourth generation family members, young Israeli children, that I had not known before.

From there we drove through Tel Aviv and the Negev to Eilat, another interesting place. Israel has about seven miles of coastline on the Red Sea and standing on the beach you can see four countries from one spot: Egypt, Saudi Arabia, Jordan, and Israel. The water was warm enough for my daughter-in-law to go swimming, in December! The highway to Eilat leads through extreme, mountainous desert, and it takes about five hours from Tel Aviv to Eilat, by car. Like the rest of Israel, Eilat is growing, into the hills since there is no flat land except a narrow strip along the beach. Again, we found that our reserved accommodations had been misdescribed, but they were tolerable.

Back to Tel Aviv. Again, our reserved accommodations turned out to be not what had been described to us by e-mail. It turned out that the English word "bedroom" did not mean to the Israeli land lady that the bed would be inside an enclosed room. We did not see much of Tel Aviv, because it rained and we had to get home. Returning the car at the airport was troublesome because Hertz was not located where all the other car return places are. Though the signs are in three languages, as usual in Israel, there was no "Hertz Car Return" sign, in any language. We made it in time, but it was a high tension experience.

We left Israel with a sense of wonder and pride. Israel is a first world country, technologically at least as advanced as we are in the U.S., and perhaps more so. My feelings are shared by my family: These are my people, and they have built a first world country, surrounded by a sea of enemies. A miracle happened in our time.

I am also reminded of Mark Twain's wisdom: "Support your country always, and your government when it deserves it." We are Americans, and the U.S. is our country. As Jews we have a special relationship with Israel. I adapt Mark Twain's wisdom: Support Israel always, and its government when it deserves it."



Do You Have a Son and/or Daughter In College?



Temple Beth Emet has started a program to connect with our students attending a College. We would like to help them to continue their Jewish way of life and offer them additional support. This way, they will always have an open line of communication with our Rabbi, should they have questions or need direction; and we will remind them of their link to Israel and to keep connected to the Jewish Community. After college, we hope to have them join our Temple, as an adult.

Please send an e-mail to office@templebethemet.com and give the following information:

**The name of the Student;
Class Level;
Address;
Name of the University, and;
If the Student is a member of any organization or club on campus.**

The Temple will send a care-package for each holiday, as a gift to the Student with a calendar of events at the Temple for each month. The Student will be invited to all events sponsored by the Temple. We would like to encourage the Student to return to the Temple as often as they wish; as the Temple would like to offer itself as a second home and place of Jewish learning. We look forward hearing from you!

Tribute Cards

Tribute cards are always in order for happy or sad occasions. These cards are a wonderful way to remember or honor someone.

Did you know that you can get on an automatic mailing to those in need of well wishes by contacting the office?

A card will automatically be sent from you in your name to those in need of healing and an amount of \$10 will be added to your bill each time a card is sent in your name.

**Contact the Temple Office at:
818 843-4787**



You can support Temple Beth Emet with a contribution to our ongoing gofundme™ campaign. Your generosity will help us maintain and improve our facilities and help with our outreach and membership development programs.

[Simply click here online!](#)



Shop at Ralphs? Register your reward card at ralphs.com and add TBE as your organization. We will receive a donation when you shop!



Sign up for AmazonSmile and TBE will receive a donation when you shop.

Go to: smile.amazon.com

Follow Us!



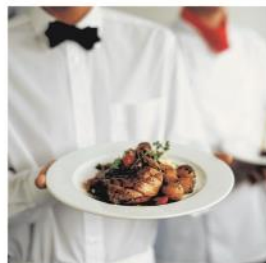


Exceptional Service, Style & Peace of Mind

Discover the confidence of CARF® accredited senior living services at the premier retirement address in Burbank. From a beautiful & vibrant setting and spectacular restaurant-style dining to engaging activities and supportive care, imagine all the comforts, services and amenities of a luxury residence combined with attentive support when the need arises.

Lunch & Learn

Wednesday, March 4th • 11:30am



Join us for a complimentary lunch and learn more about the engaging lifestyle offered at The Heights. To RSVP, please call 818.732.8450.

The Heights
AT BURBANK

INDEPENDENT & ASSISTED LIVING • MEMORY CARE

2721 Willow Street • Burbank • 818.732.8450

TheHeightsatBurbank.com



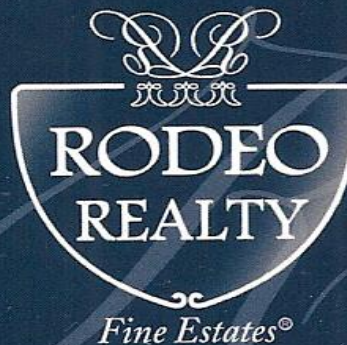
RCFE#197609362



**BROWSE OUR
TEMPLE BETH EMET
GIFT SHOP**

**TOP QUALITY TALLITS FOR
MEN, WOMEN,
BAR & BAT MITZVAH**

**All with matching bag and
kipot.
All at reasonable prices.**



Franklyn Burns

**State of California Lic. RE Broker
Realtor® Consultant
DRE License #00424940**

**15300 Ventura Blvd. #101
Sherman Oaks, CA 91403**

Business: 818.986.7300 x101

Cell: 800.897.0006

Fax: 818.986.1066

**FRANKBUSINLA@VERIZON.NET
WWW.FRANKBURNS4RE.COM**

IRA L. GOLDSTEIN

Attorney at Law

(818) 845-1421

**Estate Planning—Probate—Family Law
Civil and Business Matters**

NoHo Mailboxes

**5062 Lankershim
Blvd.
N. Hollywood, CA
91601**

**818-506-7744
Scott & Ezra
Bergstein**

**20% off FedEx
and DHL Ex-
press Shipping**

**FedEx, UPS,
DHL, USPS
Private
Mailboxes
Packing,**