



Mark H. Sobel, Rabbi    Ira L. Goldstein, President  
600 N. Buena Vista St.    Burbank, CA 91505  
(818) 843-4787    Fax (818) 557-7240  
www.TempleBethEmet.com    Office@TempleBethEmet.com

**"May the Children of the Stock of Abraham, who dwell in this land, continue to merit and enjoy the good will of the other Inhabitants; while everyone shall sit in safety under his own vine and fig tree, and there shall be none to make him afraid."**



**President George Washington, 18 August 1790**

The month of February always makes me feel America all over. Perhaps because the holidays we had off from school were President Washington's and President Lincoln's birthdays. July 4<sup>th</sup> is cool but with not as much meaning for me.

Lately, though, we have been the target of much Anti-Semitism. Why, do you ask? Israel is at war with Hamas, Islamic Jihad, Hezbollah and the Houthis and their allies want to separate us from the Jewish State.

Our Adversaries (I am being kind), don't seem to understand the unique relationship Israel has with our people. Jews came to America when it was still New Netherlands, stayed and became full citizens of New Amsterdam. There had already been Jews, named the Pinto brothers, who lived in New Haven, Connecticut. I guess it was truly a New Haven for Jews who had left the Spanish inquisition for North America.

Unfortunately, the Spanish Inquisition came to North America and accused and tried people in Mexico City Starting in 1609. Thank G-d these groups of people were living in American Protestant territories. However, there was some Anti-Semitism,

*(Continued on page 3)*

### Zoom Information For Recurring Events (See Page 12)



#### EVERY WEDNESDAY AT NOON

<http://www.templebethemet.com/home/upcoming-events/zoom-weekly-events/>

#### SHABBAT SERVICES - 7:00 PM

On Zoom and streaming on YouTube.

<https://www.youtube.com/channel/UCMGJ-6nbjGVT157iUgKFBgQ>

#### PIZZA NIGHT!

Friday, February 2, 2024 - 6:00 PM

Shabbat Services - 7:00 PM



#### TEMPLE BOARD MEETING

Tuesday, February 6, 2024 - 7:00 PM

(Also on Zoom - See Page 12)

#### 2023-24 ADULT EDUCATION JEWS OF THE WEST

February 13, 2024 - 7:00 PM

**The Civil War – Can We get there Sooner, Morrie?**

(See Page 10, Zoom information Page 12)



#### A NIGHT OF SONGS BY JEWISH COMPOSERS

FROM BROADWAY AND BEYOND

**NOW!**

SUNDAY, FEBRUARY 18, 2023 - 7:00PM

(SEE PAGE 6)



#### BOOK CLUB

WEDNESDAY, FEBRUARY 28, 2024 - 7:00 PM

**The Plot Against America, by Philip Roth**

(See Page 9. Zoom Information Page 12)

**venmo**



**USE VENMO AND PAYPAL**

**FOR DUES, TUITION, AND**

**DONATIONS**

**@tbeurbank**

**or use the QR code!**





## Religious Leadership

Rabbi Mark H. Sobel  
Music and Choir Director,  
Robyn Kreisberg

Rabbi Emeritus William M. Kramer Z"L\*  
\*His memory will always be a blessing to us.

## 2023/24 Officers and Directors

### Officers

Ira L. Goldstein, *President*  
Ken Watnick, *Vice President*  
Eileen Martin, *Treasurer*  
Melissa Potter, *Secretary*

### Directors

Donna Diamond  
Barbara Harmon  
Tracy Martin  
Theida Salazar  
Felicia van Dyk

### Sisterhood President

Marlene Dreyfuss

## Morris Gold Religious School Faculty

Rabbi Mark Sobel, Education Director  
Shirley Kirschenbaum K - 1  
Sarah Emerson 2 - 3  
Jennifer Larkin 4 - 5  
Robyn Kreisberg, 6 - 7, Music  
Rabbi Mark 7-8 Hebrew, Bar/Bat  
Mitzvah Class  
Robyn Kreisberg, Music  
Joseph Tanner - Teachers' Assistant

## Office Staff

Administrative Assistant,  
Ralph Garland

## Committee Chairs

### Education

David Goldstein

### Membership

Eileen Martin

### Ritual

Ira L. Goldstein

### Social Action

Diane Lewis-Goldstrein

### Ways and Means

Felicia Van Dyk

## Coordinators and Volunteers

### Adult Education

David Goldstein

### Book Club

Barbara Harmon

### Chai Times Editor

Ira L. Goldstein

### Children's Hospital LA Toys

Shirley Abramson

### Home Again LA

Kathy Kreans

### Library

Shirley Abramson

### Marquee

Rabbi Mark Sobel

### One Call

Diane Lewis-Goldstein

### Public Relations and Social Media

Jennifer Larkin

### Reach Out

Rabbi Mark Sobel

## Temple Beth Emet Office Hours

Monday - Thursday - 9:30 AM to 12:30 PM  
Friday, Saturday & Sunday - closed

## The office is closed in observance of the following holidays:

*New Year's Day, President's Day,  
First day of Pesach, Memorial Day,  
Independence Day, Rosh Hashanah,  
Yom Kippur, Thanksgiving*

Call the Temple office at (818) 843-4787 to contact Temple Staff/Volunteers.

Your message will be forwarded to the appropriate person.

## CHAI TIMES

**Chai Times** is the free, monthly newsletter of Temple Beth Emet of Burbank available at [www.TempleBethEmet.com](http://www.TempleBethEmet.com).

Mailed hardcopies are available for an annual TBE donation payable through the Office.

**Editable article submissions, photos and feedback are encouraged and due by the 15th of the month and may be emailed to:**

**[chaitimes@TempleBethEmet.com](mailto:chaitimes@TempleBethEmet.com) or delivered to the Temple office. Submissions will be published based on space available, relevant content, and at the discretion of the Editor, Temple Officers and Directors.**

## Follow Temple Beth Emet of Burbank

"Like" our Facebook Page at

<https://www.facebook.com/TempleBethEmet?fref=ts>



If you have any suggestions or ideas on how we can better serve our members, please call the office or email us at:

[office@Templebethemet.com](mailto:office@Templebethemet.com)



*(Continued from page 1)*

north of the border, but most stopped.

Jews fought in the French and Indian Wars on both sides. Jews fought in the American Revolution in fact the first death of an American in the Revolution was a Jewish settler, Francis Salvador.

Soon after, when West Point, the Military Academic was organized and had its first Graduation Class, there was a Junior Officer named Simon M. Levy who was the second person to graduate.

When people accuse us of not being true Americans as did some in European countries, I realize that from their perspective they have a point. Many countries had populations that had lived there for a long time before we showed up. Therefore, we were seen as not being true citizens of the nation. But in America, with the exception of the Native Americans, we rank amongst the earliest of settlers and we have paid our dues ever since.

As far as the most precious democratic gift, voting goes, we voted. And when we were not allowed to vote in Maryland elections, (in Federal ones we were), non- Jews came to our aid, especially, Reverend Thomas Kennedy, who initiated the debate over the "Jew Bill" which led to Jews voting there in 1826.

Last century, Jews joined in the great American Social movements, from Felix Frankfurter of the Supreme Court who voted in favor of Brown vs. Board of Education to Rabbi Abraham Joshua Heschel marching with Martin Luther King in Selma to Lee Weiner protesting Vietnam in Chicago.

As regards to us needing a homeland, A Jewish activist, Mordechai Manuel Noah, proposed the idea of a Jewish haven called Ararat on Grand Island, New York, near present Buffalo.

He purchased the land from the United States government with the consent of the New York State legislature and the leaders of the Native American tribes that had ceded the land to the US. To this day there is a plaque at the Buffalo City Museum which says:

ARARAT

A City of Refuge for the Jews

Founded by Mordechai Manuel Noah in the year

Tizrei 5886

Unfortunately, Ararat never caught on! Then Mordechai Noah turned his efforts to finding a home for us in the Land of Israel.

Two things remain important for us to remember here. First we have been a part of America since its inception. We have given much including our lives. And Non-Jewish Americans from the very beginning, have helped us in our times of need.

I know our Friends stand by us and by Israel. Their quiet love and friendship will sustain us as it did in the Days of Washington, Lincoln and Kennedy!

B'ahava and happy Presidents' Day,

Rabbi Mark





### PRESIDENT'S MESSAGE - February 2024

As American Jews, we are proud of the many contributions of Jews to our country's history and culture, be it in the arts, sciences, sports, law, government, or social services.



We can add to our collection of Jewish American heroes one Samuel R. Light (1896-1983). Sam was a coal mine operator in Pennsylvania. He served his country in the first World War. Active in civic activities, he was director of the Central Pennsylvania Coal Producers Association. He was director emeritus of Indiana University of Pennsylvania. A breeder of English setters, he gave one of the dogs to President Eisenhower. Light was at one time president of the Field Trial Dog Association and in 1976 was elected to the Field Trial Dog Hall of Fame.

But Sam made another, perhaps greater, contribution to the American society. In 1952 Sam became president of the Punxsutawney Groundhog Club. Sam decided he would give the day some added flair by wearing a top hat and tails when he plucked Punxsutawney Phil, the town's famed groundhog, from a tree stump shortly before 7:30 a.m. to determine if Phil could see his shadow. If he could not, it meant an early spring. If he could, it meant six more weeks of winter.

As reported in the Jewish Daily Forward on January 28, 2021:

"In those days, celebrities and other important people would arrive in New York aboard ocean liners, and there to greet the ships was Grover Whalen [chairman of the Mayor's Committee on Receptions to Distinguished Guests]," recalled Light's widow, Elaine. "He wore a tall hat and tails. Sam adopted that costume to greet the groundhog because he said he, too, was a very important person."

Sam also composed the now-traditional announcement that commences the annual Groundhog Day ceremony, "Hear Ye! Hear Ye! Hear Ye! On this Groundhog Day, February 2nd, Punxsutawney Phil, Seer of Seers, King of the Groundhogs, Prognosticator of Prognosticators has responded to the tapping welcome of Groundhog Club President ...."

Groundhog Day began in 1886. The event was later carried on radio and then on local Pittsburgh television stations. In 1960 Sam's wife Elaine brought Punxsutawney Phil to appear on the "Today Show" with Dave Garroway and Phil's fame only grew from there.

Sam served as president of the town's Groundhog Club until 1976. He died in 1983 and his trademark top hat is now in the town's historical museum.

The Jewish community in Punxsutawney dates back to the 1830s. Its original synagogue was built in 1900, and by 1907 there were an estimated 200 Jews in town. Today, only a few remain. The synagogue closed in the 1980s.

Thanks to Sam Light, Groundhog Day is known and "observed" across the United States. While there are other groundhogs in other towns that are called upon to predict the early or late arrival of spring, for us, as American Jews, on the morning of February 2, our eyes turn toward Punxsutawney, Pennsylvania. Happy Groundhog Day!

-- IRA L. GOLDSTEIN, President



*February Birthdays*

<i>Pat Bigley</i>	<i>February 1</i>
<i>Evan Robert Feldman</i>	<i>February 12</i>
<i>Stuart Friedman</i>	<i>February 14</i>
<i>Aleesa F Aronoff</i>	<i>February 15</i>
<i>Marlene Bobrowsky</i>	<i>February 20</i>
<i>Aiden Solomons</i>	<i>February 23</i>
<i>Demetri Buss</i>	<i>February 25</i>
<i>Camryn Bigley</i>	<i>February 27</i>

*We have no record of February anniversaries*



**Yahrzeit Donations**

*Fred Kubik in memory of Tena Kubik*

*Beverly Genereux in memory of Nathan Rose*

*Dan & Flora Werner in memory of Susan Werner*

*Marcia Jackman in memory of Alfred Jackman*

*Betty Cantor and Gail Acre in memory of Maurice Rosenthal,*

*Lena Rosenthal, Sol (Sheik) Rosenthal*

*Scott L Fishman in memory of Dick Fishman*

**In Memorium Donation**

*Shirley Abramson in memory of Leona*

 **BROADWAY + BEYOND**  **IN BURBANK!**



A NIGHT OF MUSIC HONORING JEWISH COMPOSERS  
FEATURING THE TEMPLE BETH EMET CHOIR & MEMBERS!

**TEMPLE BETH EMET**

**600 N. BUENA VISTA ST. BURBANK, CA 91505**

**FREE PARKING LOT OR STREET PARKING**

**SUNDAY, FEBRUARY 18, 2024**

**7PM-9PM**

**TICKETS - \$10**

MAKE CHECKS PAYABLE TO:  
Temple Beth Emet  
600 N. Buena Vista Street  
Burbank, CA 91505  
(818) 843-4787  
VENMO/PAYPAL: @tbeburbank



*"The Temple With a Heart"*



## ***To Fran and Leona with Love and Appreciation***

### **“You will make an impression on your children”. Deuteronomy 6:8**

Jim Mattes used to say the “The Angel of Death has not been kind to us this week”. Well, for one week last month this was doubly true. We lost two leaders of our synagogue in eight days. Both women worked tirelessly for the Temple. Both were sisterhood presidents and we see the results of their efforts every time we come to Temple and during services.

Their names are Leona Zollman and Fran Bernstein.

They were two individuals, each one very different in their personalities from the other. One was quiet while the other was publicly outspoken. One was a professional teacher while the other taught for us on Sundays. Both loved Judaism and this Temple. Both loved their husbands very much, two men who themselves were very different.

They lived the V’ahavta prayer: “You will love with all your heart, your soul and your strength of personality (uniqueness)”. Through their different methods of leadership and, of course love, they made an impression on all of us. On a personal note, whenever I put up a message on the Sign board out front, I am fulfilling the commandment they established, ‘You shall write it on the gates of your house’. For both Leona and Fran this was their house. The Temple’s ‘Hamishness’ is a testimony to their efforts.

When I was preparing the memorials for both, I thought about Rabbi Kramer’s interpretation of El Molei Rachamim. It is usually translated as ‘G-d full of Mercy’, but he translated it as ‘G-d full of Motherly Love’ the word, ‘Rachamim’, coming from the Hebrew word for womb. As the mother grows the embryo and the fetus into the full grown being, so did these women help us grow into the beings we are today.

From the lessons they taught us and our children to the Sign board outside to the expansion of the Temple Gift Shop to the Women’s Seder, these sisterhood presidents’ loving placed our Temple in a unique place in the Judaic life of the Temple.

May their memory always be a blessing!

Rabbi Mark



Fran Bernstein



Leona Zollman



**Temple Beth Emet of Burbank**  
*sisterhood*

The Temple Beth Emet Sisterhood focus on serving the Temple and the community. Membership in Sisterhood means making a commitment to living Jewish. By being a member, you become an active link in the history of our people. You serve as a role model for Jewish values. Each member blossoms in their own individual way as they experience the camaraderie of Sisterhood and share in service to the Jewish community.



**FROM THE SISTERHOOD TREASURER - Eileen Martin**

The Sisterhood finally had its meeting after a few delays due to illnesses. We met Sunday at 10:30 with the purpose of cleaning up the back of Blum Hall and dispose of the leftovers from our Boutique sale. We worked hard and filled our trunks with whatever we decided we could not sell. We separated some items we still feel can be sold at a later date. And, we got a lovely surprise thanks to the Rabbi. There was a Memorial Thursday for Fran Bernstein and there was a lovely, untouched deli tray which the Rabbi designated for the Sisterhood in her memory because she was a former Sisterhood president. After cleaning, we enjoyed bagels and lox, etc. for breakfast. A lovely ending for our meeting. We will decide when to have our February meeting because of the delay in our January meeting. Thanks to everyone who came and worked so hard (Joanne Serin, Cherie Rye, Jennifer Levin, Felicia Van Dyk, Sandy Cohen, Marlene Dreyfuss, Eileen Martin).

***This Is Your Personal Invitation to Join Temple Beth Emet's Sisterhood***

Sisterhood is a group of friends who work together for our Temple, our children, and our community, in a very tangible way. Our President,

**We meet the first Sunday of every month at 10:00 AM. Please join us. Dues are only \$15 per year (commencing September of every year). Please fill out this form, cut it out and send it with your payment to: TBE Sisterhood, c/o TEMPLE BETH EMET, 600 N. Buena Vista Blvd., Burbank, CA 91505; or just leave it with the Temple Office.**

**NAME** \_\_\_\_\_

**ADDRESS** \_\_\_\_\_

**PREFERRED PHONE** \_\_\_\_\_

**E-MAIL** \_\_\_\_\_





FEBRUARY YAHRZEITS

Table with columns: NAME, REMEMBERED BY, DATE, NAME, REMEMBERED BY, DATE. Includes sections for 'At Temple February 2, 2024', 'At Temple February 9, 2024', 'At Temple February 16, 2024', 'At Temple February 23, 2024', and 'At Temple March 1, 2024'.

CREATE A LASTING LEGACY

Planned Giving is a wonderful and loving way to ensure the legacy of Temple Beth Emet of Burbank and future generations. Planned Giving can be as simple as a bequest or a more complex financial arrangement which can provide many options and possible tax deductions for the donor.

Speak with your legal and financial advisors as to the best way to structure your wills and estate planning to include the Temple in your current and future plans.

Information on Planned Giving can also be found on our website at:

http://www.templebethemet.com/social-action/donations/



## TEMPLE BETH EMET BOOK CLUB

Conducted by Barbara Harmon.

Book Club was founded by Fran Bourne Johnson Z"L\*

\*Her memory will always be a blessing to us.



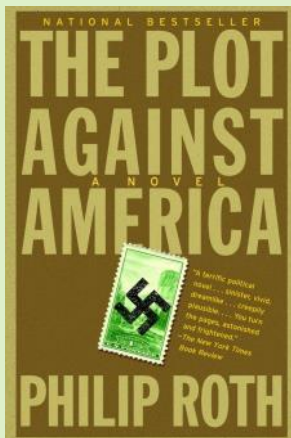
**Where:** Blum Hall at Temple Beth Emeth of Burbank

**When:** **Wednesday, February 28, 2024**  
**7:00PM to 8:30 PM at Temple and on Zoom**  
<https://us02web.zoom.us/j/88422348913?pwd=V1OrY1ZYV05VYzdNejJoK0VCcHUxZz09>  
Meeting ID: 884 2234 8913 Passcode: 388498  
Dial in Phone Numbers:  
(669) 900-6833 US (San Jose) (346) 248-7799 US (Houston)

**What book will we be reading?**

### ***The Plot Against America***

by Philip Roth



Synopsis:

In an extraordinary feat of narrative invention, Philip Roth imagines an alternate history where Franklin D. Roosevelt loses the 1940 presidential election to heroic aviator and rabid isolationist Charles A. Lindbergh. Shortly thereafter, Lindbergh negotiates a cordial "understanding" with Adolf Hitler, while the new government embarks on a program of folksy anti-Semitism.

Courtesy of Amazon



# ADULT EDUCATION SERIES 2023-2024

Presented by RABBI MARK H. SOBEL



## JEWES OF THE WEST

**FEBRUARY 13, 2024 - THE CIVIL WAR**

**CAN WE GET THERE SOONER, MORRIE?**

**MARCH 12, 2024 - CALIFORNIA**

**THE GOLDENEH MEDINA?**

All sessions begin at 7:00 PM—Open to the public.  
There is no charge for this series, donations accepted.  
Also available via ZOOM, meeting information on our website.



*Purchasing a leaf on the **June Beck Tree of Life** in our Temple foyer is a wonderful way to give thanks when celebrating the birth of a child or grandchild, a milestone birthday or anniversary, a wedding, Bar or Bat Mitzvah, Confirmation, or any other simcha!*

**CONTACT THE OFFICE FOR ORDERING INFORMATION AND PRICING.**









Shop at Ralphs?

Register your reward card at [ralphs.com](https://www.ralphs.com) and add TBE as your organization.

We will receive a donation when you shop!



	MONDAY	TUESDAY	WEDNESDAY	THURSDAY	FRIDAY	SATURDAY
				1	2 6:00 PM Pizza Night 7:00 PM Shabbat Services 	3
4 9:00 AM Religious School Regular Session	5	6 7:00 PM Temple Board Meeting	7 12:00 Lunch with the Rabbi on Zoom	8	9 7:00 PM Shabbat Services	10
11 9:00 AM Religious School	12	13 7:00 PM Adult Education	14 12:00 Lunch with the Rabbi on Zoom  Valentine's Day	15 	16 7:00 PM Shabbat Services	17
18 No Religious School Presidents' Day Holiday 7:00 PM A Night of Songs  Presidents' Day	19	20	21 12:00 - Lunch with the Rabbi on Zoom	22	23 7:00PM Shabbat Services	24
25 9:00 AM Religious School Regular Session	26	27	28 12:00 - Lunch with the Rabbi on Zoom 7:00PM - Book Club 	29 		

**Coming in March:** Lunch With the Rabbi - Every Wednesday at Noon via Zoom. Shabbat Services - Every Friday at 7:00 PM. Fri., March 1 - 6:00 PM - Pizza Night, 7:00 PM - Shabbat Services - March 5 - 7:00 PM - Temple Board Meeting Tues. March 12 - 7:00 PM - Adult Education - Jews of the West - Sat. March 23 - Purim Eve - Multilingual Megillah Reading Sun. March 24 - Purim Carnival - Wed. March 27 - 7:00 PM - Book Club.





## NoHo Mailboxes

5062 Lankershim Blvd.  
N. Hollywood, CA 91601

818-506-7744  
Scott & Ezra Bergstein

**FedEx, UPS,  
DHL, USPS  
Private  
Mailboxes  
Packing,  
Shipping &  
Office Supplies**

**20% off FedEx  
and DHL  
Express  
Shipping for  
Temple  
Members.**

## BROWSE OUR TEMPLE BETH EMET GIFT SHOP



**TOP QUALITY TALLITS FOR  
MEN, WOMEN,  
BAR & BAT MITZVAH  
All with matching bag and  
kipot.  
All at reasonable prices.**

## *ZOOM INFORMATION FOR RECURRING EVENTS*

### **Lunch With The Rabbi – Wednesdays 12:00 PM**

<https://us02web.zoom.us/j/86873080719?pwd=cjlzcWNZNnNFSXJSTGNTRWJIS0pOdz09>

Meeting ID: 868 7308 0719 - Password: 410358

### **Shabbat Services Every Friday at 7:00 PM**

<https://us02web.zoom.us/j/88306033879?pwd=dFMxWIBIY09SNUVqSzAycUp0RjZRdz09>

Meeting ID: 883 0603 3879 - Passcode: 144071

### **Temple Board Meeting/Annual Membership Meeting**

<https://us02web.zoom.us/j/85673588260?pwd=MzcvSEpqdVJ0b2VETHBCUkISaVROdz09>

Meeting ID: 856 7358 8260 - Passcode: 558930

### **Adult Education Sessions**

<https://us02web.zoom.us/j/82466952111?pwd=akJnaHN1eFdQajNBVmNSNXNBMzhxdz09>

Meeting ID: 824 6695 2111 - Passcode: 907136

### **Book Club**

<https://us02web.zoom.us/j/88422348913?pwd=V1QrY1ZYV05VYzdNejJoK0VCcHUxZz09>

Meeting ID: 884 2234 8913 Passcode: 388498

### **Dial in numbers** (Use Meeting ID and Passcodes Above

(669) 900-6833 US (San Jose) - (408) 638-0968 US (San Jose)